



**MALENY**

COUNTRY ESTATE

*Weddings*

**Introductory Re-launch Prospectus**

**January 2024 - June 2025**

*Fall in love with*

***MALENY COUNTRY  
ESTATE***

~

*The hinterlands largest and only wedding  
venue with onsite accommodation for up to  
70 of your guests*

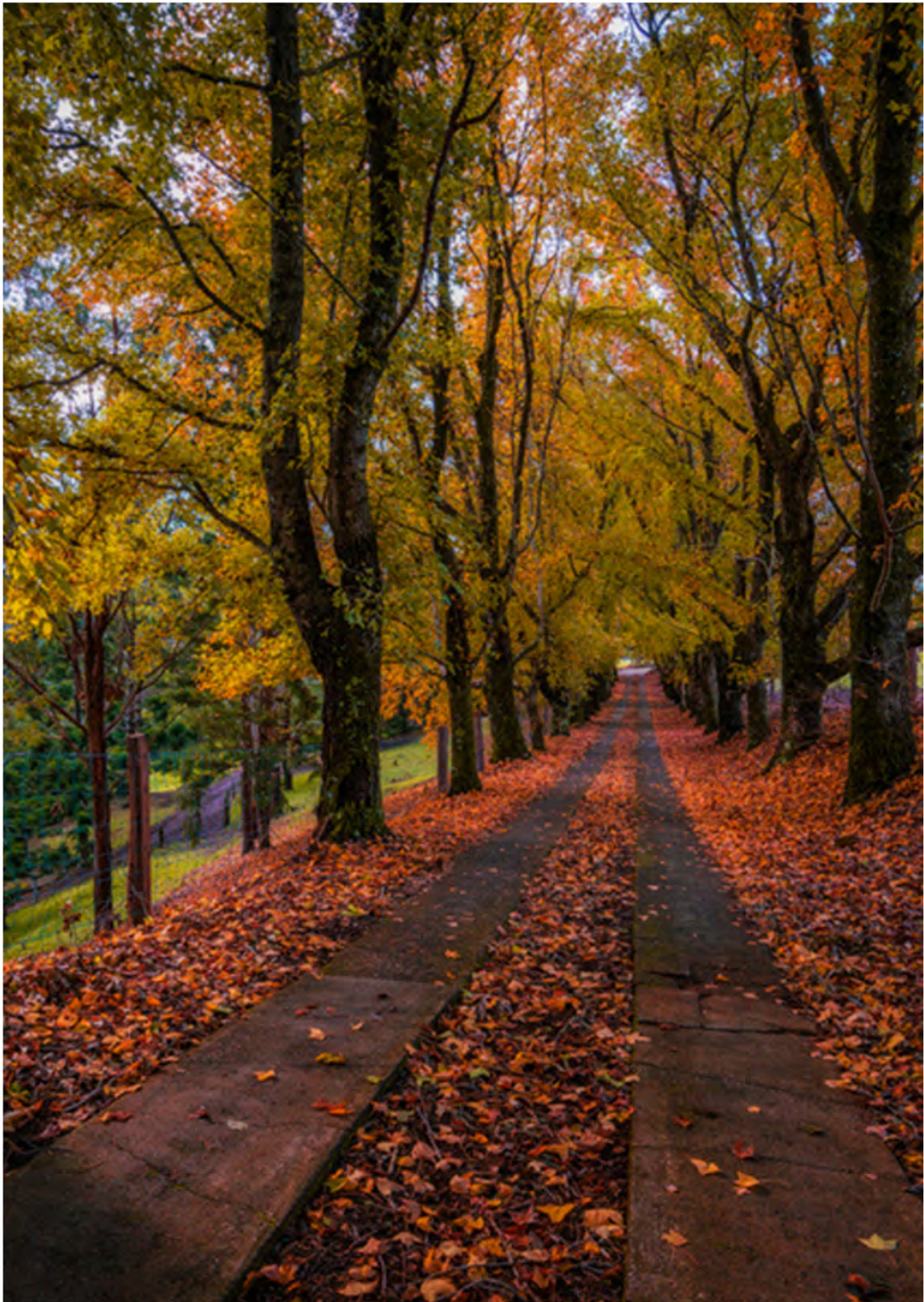


Photo: Ben Messina | @benmessinalandscapes



---

# Welcome to Maleny Country Estate

OUR PRIVATE ESTATE BOASTS  
STUNNING BACKDROPS, PANORAMIC  
VIEWS AND ON-SITE  
ACCOMMODATION.

THE PERFECT EXPERIENCE FOR YOUR  
SPECIAL DAY.

---

Congratulations on your engagement and thank you for considering Maleny Country Estate for your special day.

From the moment you enter down the green and golden driveway, lined with towering liquid amber trees and aged rock walls, you're transported to another world.

Century old figs and towering pine trees engulf you, creating a truly idyllic landscape making it the perfect destination for your wedding day.

Situated on 185 acres of rolling green hills, with panoramic views of the Blackall Range, we have your perfect backdrop sorted.

We welcome you to book a viewing and explore the estate in person. We hope you fall in love with our very special location just as we have.

*Mike, Victoria and Amanda*

---

# OUR PROMISE

## NOT JUST A VENUE

*We aspire to give you and your guests an unforgettable experience not just a venue.*

---

Your day is all about you - we are passionate about creating a venue and experience for all wedding sizes and styles.

We are an exclusive-use venue, with only one wedding held per weekend. Maleny Country Estate is the only venue in the hinterland region with onsite accommodation for up to 70 guests.

With such expansive grounds, multiple ceremony spaces, and reception locations to choose from, we are certain we can create something special together.

We offer exclusive private use of our estate and access to the grounds from 8:30am the day of your wedding or 2:00pm check-in if you are checking in the day prior to your wedding.

Make your wedding an experience your guests will never forget. Why not make a complete weekend of it and organise an on-site group dinner the night before your wedding or a recovery brunch the morning after?

---



Photos by (Clockwise): (1 &3) Naturally Jek Photography | (2) Lauren Young Weddings



Photo: Adore Her Photography | @adoreher\_photography

---

# OUR TEAM

*this is a beautiful family adventure for us. Together we are creating an unforgettable experience in this exquisite part of the world.*

---

After many years of searching, in 2018 we became the custodians of this enchanting property. Inspired by the idyllic location, stunning natural diversity of the landscape, and incredible rockwork, we have worked tirelessly to create a really special venue and experience for guests.

Our team - Michael, Victoria, and Amanda, focused on creating multiple intimate spaces that allow couples and their guests to connect with the location and make it their own.

We spent a lot of time researching, visiting, and talking with market leaders, venues, and suppliers about what works well and what we could offer our guests. We chatted with makeup artists, caterers, and photographers to make sure 'our vision' would work for what couples are looking for as well as for all the vendors.

Doing this allowed us to ensure we added in spaces or services that were crucial but often not available at other venues. We also love that we are able to offer a large amount of accommodation to our guests, it just adds the extra bit of special to the day if guests can stay on-site and not have to worry about finding accommodation elsewhere or getting taxis/buses home.

We feel a deep responsibility to ensure we pay respect to our geographical location and the surrounding community that continues to make this area so special.

Throughout our renovation and upgrades, we have almost exclusively hired local trades and services, engaged and partnered with local businesses, and continue to endeavour to support locals wherever we can.

Maleny Country Estate is proudly a family-owned and operated venue, we pour our love, time, and passion into the Estate and we believe you will fall in love just as we have.





Photos: Lee Burgess - Life and Love Photography | @lifeandlovephotographyyleeb

---

# PLANNING

*We want to help make saying 'I Do' the only thing you need to think about on your day.*

---

## **WE ARE SMALL BUT MIGHTY**

We are a small, family-run estate and as such have a small team and currently operate as a venue only.

Our team works closely with you, your wedding planner and stylists, and your chosen vendors, to ensure everything runs smoothly.

If you have no idea where to start, from stationary to catering to flowers, we can help partner you with one of our superb preferred suppliers who will turn your dream into a reality.

Due to the size of our estate and the locations of our ceremony and reception spaces, all weddings at Maleny Country Estate must have a wedding planner or a nominated person responsible for organising all your vendor agreements, liaising with the venue (us) and providing run sheets prior to the day, with all milestones for your day/weekend mapped and provided to all vendors.

---

## **BEFORE THE DAY**

We ensure we stay connected and in communication in the lead-up to your big day. We conduct planning meetings with all our couples and their nominated planner at 6 months, 3 months, and 4 weeks prior to your wedding date.

## **ON THE DAY**

We want you to relax and enjoy this day with your friends and family. We live on-site, so we are never too far away if/when you need us.

The day of your wedding our venue manager and our support staff will be on-site to ensure things run smoothly from a venue perspective.

---

---

# THE ESTATE HOUSE

*A luxurious beginning to your special day*

---

## **START YOUR DAY RIGHT**

We know that having the right space and atmosphere to get ready in is paramount to the perfect wedding day.

Welcome to "The Estate House". The jewel in our crown and our favourite space on the estate, our luxury suite, situated on the upper level has been carefully designed and transformed with wedding parties in mind.

Drenched in natural light, overlooking the swimming pool and panoramic views of the range, it is the perfect backdrop. Open and airy spaces with muted white and cream tones, decorated with delicate and homely country style, the stage is set for a truly beautiful start to your big day.

The estate house boasts 5 bedrooms, 3 bathrooms, 2 full kitchens, air conditioning, and 2 large living spaces, giving you and your party all the space you need to spread out, sip mimosas and enjoy getting ready together. Our purpose-designed makeup room, fitted with 3 full stations and front-lit mirrors makes it a breeze for your hair and makeup artist to set up and do their magic.

The lower level of The Estate House is designed as a communal space, perfect for a post-reception night cap or an early morning breakfast/coffee with your guests who stay onsite. It has a games and TV room, a large dining and sitting room, and a library room with a fireplace.

The Estate House can be added to any booking for a 1 or 2-night stay for an additional fee. All Estate House add-ons include a grazing board for 8-10 people and a bottle of Champagne delivered the morning of your wedding.

---



Photos: Naturally Jek Photography | @naturallyjek.photography (1&5) | Jen Oliphant | @jennifer\_oliphant\_commercial (2,3&4)



# GET READY IN STYLE

---

# THE STUDIOS

---

The Studios have been designed as a relaxed and calm space for the groom's party to get ready in style.

Positioned in a private location away from any other buildings, The Studios features 3 double, hotel-style rooms with all the amenities you need.

Styled with a rustic country theme, you'll find rich earthy tones and muted neutrals to complement any groom-styled photos.

Overlooking our farm and endless views out to the Blackall Range. You can enjoy the afternoon sunshine oozing over the private deck, while you and your closest sit back with a cold beer and wait for the festivities to start.

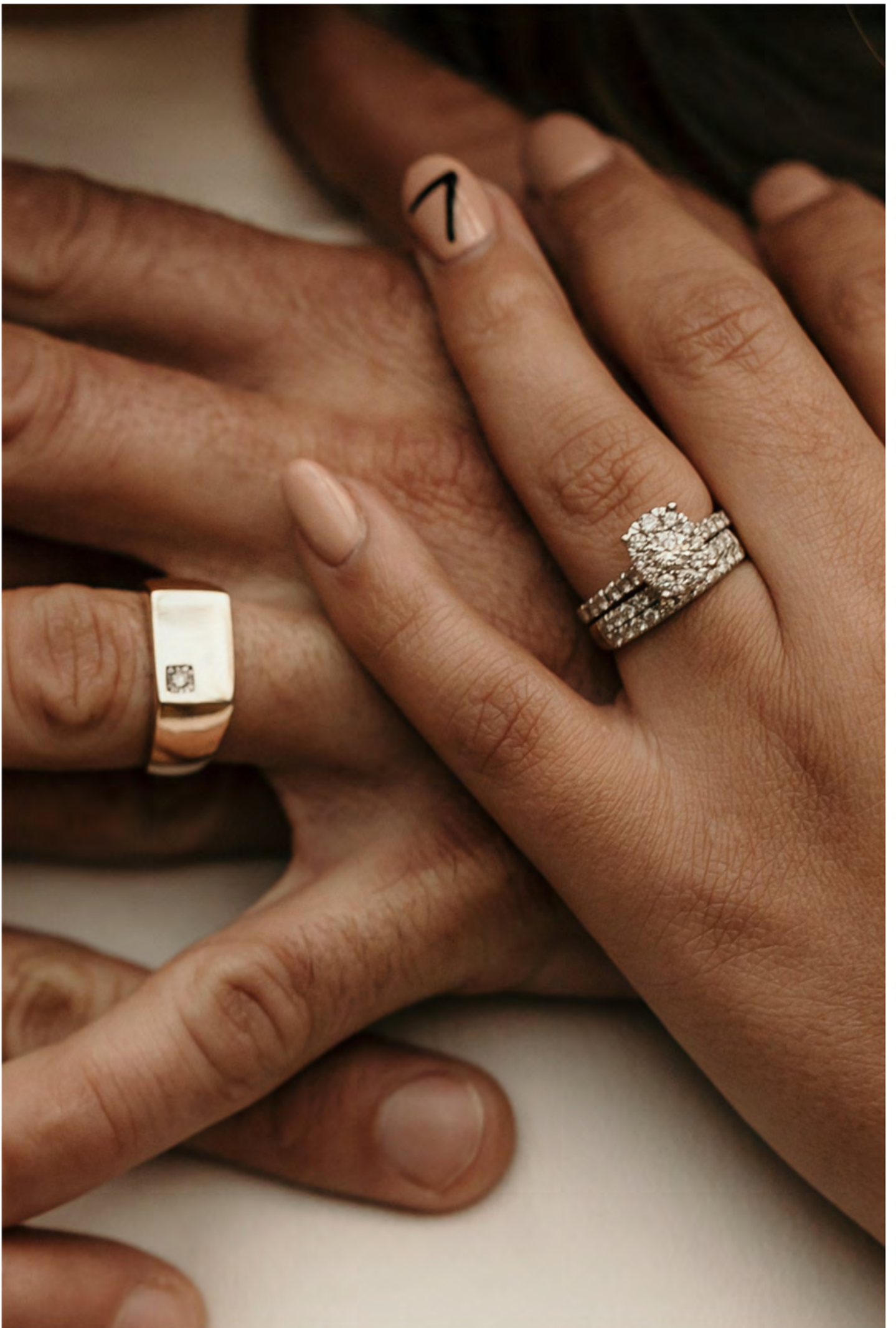
The Studios sleep up to 12 people (4 per room) and can be added to any booking for a 1 or 2-night stay for an additional fee. All Studio Accommodation add-ons include a grazing board for 8-10 people and a bottle of sparkling delivered on the morning of your wedding.

---



*Make saying "I Do" the most beautiful memory of your day!*







---

# CEREMONIES

*Your next chapter starts here ...*

---

## **MAKE SAYING "I DO" THE MOST BEAUTIFUL MEMORY OF YOUR DAY**

Choose your ideal space to say "I do" from one of our multiple ceremony locations. Or find your perfect spot on the estate and we will do what we can to make that happen for you.

Each space offers a unique experience tailored to your personal style and takes full advantage of landscaped gardens, towering trees, and of course panoramic views. Your guests will be blown away by the natural beauty and charm on your special day.

*Queensland is notoriously unpredictable with its weather, in the unfortunate event of wet weather all ceremonies and receptions must have a wet weather contingency plan.*



Photo: Life and Love Photography | @lifeandlovephotographybyleeb

### **THE CHAPEL \***

St Albertus Chapel, with sky-high ceilings, lovingly hand-carved timberwork, original stained-glass windows, and a bell tower is the traditional ceremony space you have been looking for.

Giving old-world European vibes, ring the bells after you say "I Do" and wander outside to be spoiled by hand-laid stonework, surrounded by green lawns and manicured gardens. It's the perfect backdrop for capturing those beautiful wedding shots.

*\*All ceremonies booked in the chapel will incur an additional hire fee.*

### **GARDEN TERRACE**

Say "I do" as the sun peeks through the trees, casting ambient light and a natural afternoon glow. The Garden Terrace is a flexible outdoor space and can be styled to suit any theme. This stunning outdoor space is set beneath our towering Pecan Nut and Poinciana trees, specked with warm white fairy lights overlooking the dam and gardens.

### **THE LAWN - UPPER**

No need to create your perfect backdrop, The Lawn's panoramic views looking over the Blackall Range and the rolling hills will do it for you. The elevated lush green lawn and surrounds are the perfect accompaniment to your dream outdoor setting. Our 'blank canvas' space allows you to create your dream ceremony for any sized wedding.

### **THE LAWN - LOWER - (Coming Late 2023)**

The lower lawn allows the same backdrop as the upper lawn but in a more intimate setting. Positioned in the lower paddock with views of the dam, forests, and rolling hills, positioned next to a towering Red Bean tree - it offers a more intimate setting for ceremonies while leaving the large upper lawn for a roomy Reception space.

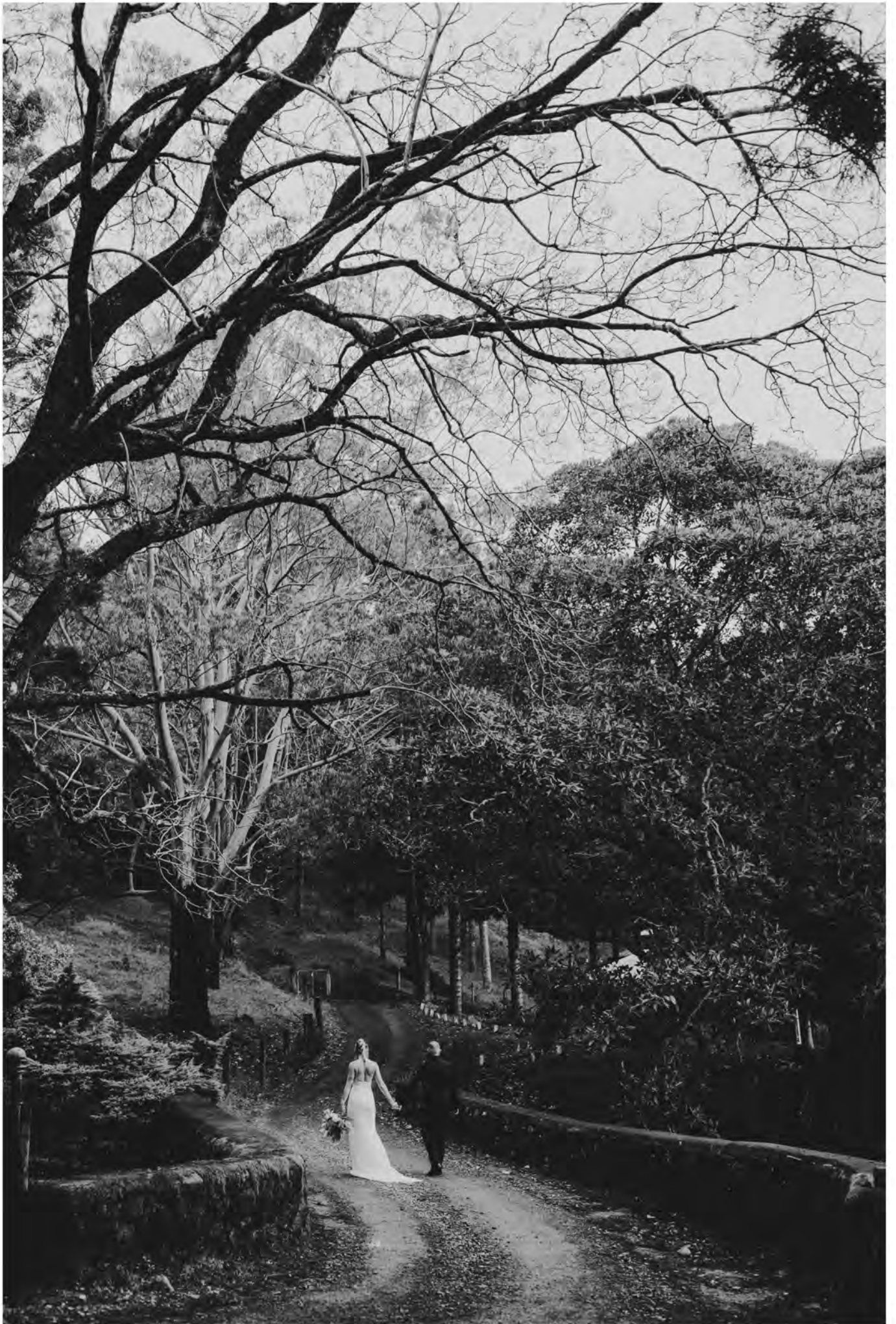


Photo: Life and Love Photography | @lifeandlovephotographybyleeb



Photo: Lauren Young Weddings | @laurenyoungweddings

---

# PHOTOGRAPHY & VIDEOGRAPHY

*Explore the grounds and be engulfed by its raw beauty.*

---

## PHOTOGRAPHY LOCATIONS

From our incredible tree-lined driveway to the 100+-year-old fig trees, our estate has some pretty incredible photography locations.

With over 185 acres of land, our natural rainforests, dams, and century-old trees, there are endless photo opportunities no matter the season.

Spring and Summer spoil you with lush greenery and blossoming florals, while Autumn and Winter put on a real show, with the golden, red, and burnt orange turn of the trees, scattering the estate with vibrant leaves and a vintage European feel.

We welcome your chosen photographers and videographers to book a time with us before your big day to scope the best spots to get you the perfect wedding photos.

If you need any recommendations, we would be happy to put you in touch with some incredible artists.

---

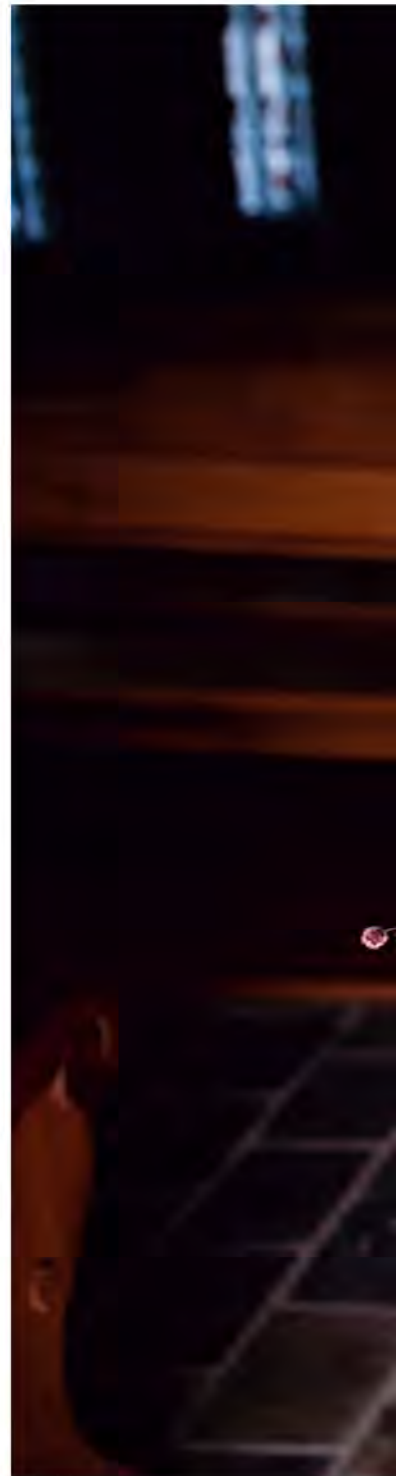




Photo: Life and Love Photography | @lifeandlovephotographybyleeb

---

# RECEPTIONS

*Get the party started*

---

## LET THE CELEBRATION BEGIN

Maleny Country Estate is now welcoming Marquee and Sperry tent-style Receptions. Choose from one of two locations, "The Courtyard" or "The Lawn".

Our unique location allows for groups from 2 to 250+ people\*.

*\*Capacity numbers are calculated using standard long tables (2.2m that seat 8-10 people per table)*



Photos: Jackson Grant Weddings | @jacksongrantweddings

## **THE LAWN (marquee or Sperry/Tipi tent option)**

The Lawn is the ideal space for creating an intimate and magic atmosphere for any size group.

Don't want formal dining? Set up long tables speckled with candles, elegant florals, and whimsical lighting for a family-style dining experience or pair it back with a cocktail-style setting and focus on the important things like champagne and dancing under the stars.

Set up your marquee or Sperry tent or speak to us about your ideal set up and we are certain we can make your dream a reality and create the reception space you have always imagined.

We stay up to date on current trends and can partner you with suppliers who will make your wedding day dreams come true.

*\*Tipi tents are quoted on a custom basis and are subject to supplier availability.*

## **THE COURTYARD (marquee option only in this space)**

"The Courtyard" is located right next to The Estate House, its elevated position gives a brilliant view of the estate and overlooks the pool and panoramic views of the Blackall Range.

The sky is the limit with what you do to style your marquee, this is the perfect blank canvas to make your dream reception come to life.





Photos: Jackson Grant Weddings | @jacksongrantweddings





Photos: (1&3) Jackson Grant Weddings | (2) Lauren Young Weddings

---

# ACCOMMODATION

*Why not stay the night*

---

## SETTLE IN FOR THE WEEKEND

No need for designated drivers, taxis, or shuttle buses! Maleny Country Estate is designed for your ultimate wedding weekend experience. Comfortably sleeping up to 70 people, our range of on-site accommodations makes finding the perfect place to stay so simple.

Take advantage of our onsite accommodation and organise a pre-wedding dinner or a post-wedding recovery session with your guests staying onsite.

---

Our cottages and chalets sit in secluded locations throughout the Estate. Each boasts indoor wood fireplaces and carefully curated outdoor firepits, perfectly positioned to soak up the views.

Designed with the perfect blend of country charm and contemporary elegance, every suite offers a different experience. Handpicked artworks, collectibles, and books have been carefully chosen and paired with cosy soft furnishings.

You will feel blissfully at home, with every detail taken care of, from modern appliances right down to premium linens. Everything you need to relax and reconnect is right here.

Ask us about adding Accommodation to your package or check out the suites online and let your guests book themselves.



---

# THE ESTATE HOUSE

*All your friends and family in one  
place*

---

## **5 BEDROOM BRIDAL SUITE**

Our dedicated bridal suite sleeps 10 people with 5 well-appointed bedrooms, 3 bathrooms, 2 living areas, a fireplace, 2 kitchens, air-conditioning, and stunning grand dining space.

Add on a 1 or 2-night stay to any package. See our Accommodation Menu for package options.





Photo: Jen Oliphant | @jennifer\_oliphant\_commercial

---

# THE STONE COTTAGE

*Romance awaits you*

---

## THE HONEYMOON SUITE

The perfect way to wind up your big day, down a private tree-lined driveway, our romantic stone cottage awaits. You are welcomed by floor-to-ceiling stone walls, modern furnishings, and its cosy interior. Snuggle up by the fireplace or unwind together in the couple's soaker tub. Climb into luxurious linens and soak in the memories of your big day as you celebrate the start of your new life together.

Add on a 1 or 2-night stay in the Stone Cottage to your package. See our Accommodation Menu for packages.



Photo: Jen Oliphant | @jennifer\_oliphant\_commercial

---

# THE STUDIOS

*Hotel style rooms with stunning views*

---

## **HOTEL-STYLE DOUBLE STUDIO ROOMS**

The Studios have been created to offer a cheaper accommodation option. There are 3 studio rooms, each set up like your typical double hotel room, with 2 x Queen beds, a kitchenette, a bathroom, a TV, and shared balcony, and outdoor spaces including a deck and firepit.

Sleeping 12 people maximum, overlooking our horse and pony paddocks and a panoramic view of the range, The Studios, are positioned separately from all the other accommodations, making them a beautiful secluded option.

Add on a 1 or 2-night stay to any package. See our Accommodation Menu for package options.



Photo: Jen Oliphant | @jennifer\_oliphant\_commercial



# REVIEWS

---

*Kyle and Kayla - December 2021*



Photo: Lauren Young Weddings | @laurenyoungweddings

**"Maleny Country Estate is one of those rare places that you arrive as guests, but leave as family."**

Our wedding wouldn't have been possible without the Team at Maleny country estate; Mick, Victoria and Amanda made planning a wedding enjoyable and went above and beyond to ensure that everyone was comfortable.

The venue and accommodation are breath-taking and the natural backdrop of Maleny made it feel like we had travelled back in time, when really we were only an hour out of Brisbane.

We have lost count of how many times we have been back, but we will keep going as long as they will keep having us. With our first daughter on her way we can't wait to show her our home away from home, it's the first place we are going"

---

*Emma and Luke - July 2022*



Photo: Naturally Jek Photography | @naturallyjek.photography

**"I don't know where to start! The grounds at Maleny Country Estate are beyond incredible, we had an intimate elopement and stayed in the Stone Cottage. The accommodation was immaculate, the amenities were second to none. The staff were absolutely beautiful, they went over and above to make sure we had the most incredible day. From our first communication to the day of our arrival Amanda's communication was so clear.**

*We will be booking at least one stay every year, our experience was exceptional."*

---

*Katia and Bruce - March 2022*



Photo: Brisbane wedding Photography

"Bruce & I hosted our wedding day at Maleny Country Estate in March. Amanda, Mick and Victoria were absolutely amazing, they went over and above to make sure we had the most wonderful day. They answered all our questions and did all in their power to meet all of our special requests. We booked accommodation for many of our guests as well which made it even more special. The landscape and the views on the estate are absolutely breathtaking. We could not have asked for more. I cannot thank them enough for their contribution and help in making that day THE best day of our lives!"

---

*Michael and Veronica - October 2022*



Photo: Jackson Grant Weddings | @jacksongrantweddings

"We had our 180 person wedding in late October at Maleny Country Estate, the day and the site could not have been better if we tried. Amanda, Mike and Victoria worked tirelessly to ensure everything would be as perfect as could be for us, and it was. The bridal suite was luxury, with so much thought put into the final touches, including robes, a room with Hollywood mirrors for getting ready and plenty of space to enjoy the morning with family and the bridal party. The site itself was stunning, incredible views and so much greenery. If we could do it all over again we would."

---

# PRICING

*Designing your perfect day starts here ...*

---

## FULL WEDDING PACKAGES: CEREMONY + RECEPTION

---

Here at Maleny Country Estate, we run things a little differently. As we also call this beautiful estate home, we only hold one wedding per week, allowing our couples and their guests to make it a weekend experience to remember.

Wedding Packages are for couples looking for an "all-in-one-place" venue. All wedding packages include 2 Nights accommodation in The Estate House and 1 Night Accommodation in The Stone Cottage for the couple the night of the wedding.

Check-In: 12pm Friday

Check-Out: 1pm Sunday

Create your perfect setting for any size wedding party with your choice of Premium Sperry Tent, Tipis, or Marquee. Our package pricing caters to groups from 31-250+ guests. If you have a party larger than 250 guests, get in touch with our team via email to discuss what you are hoping for and we will provide a customised quotation to suit your needs.

***For Reception Only or Complete DIY (Venue Hire Only) quotes, please contact our team directly with your requirements.***

*\*All seated capacities are calculated on standard long/rectangle tables that seat 8 guests. If you are planning for round tables at your reception your tent/marquee size may need to increase based on your guest count.*

*Prices are subject to change and are only agreed upon by official acceptance of a signed quote and booking confirmation forms. All events held on Public Holiday Weekends are subject to a 20% Surcharge.*

---

# INCLUSIONS

*What's included ...*

---

## **CEREMONY AND RECEPTION PACKAGE INCLUSIONS**

- 2 Nights Luxury Accommodation in The Estate House, including grazing board and a bottle of sparkling delivered the morning of your wedding. (RRP: \$5800.00)
- 1 Night Luxury Accommodation in The Stone Cottage for the couple the night of the wedding (RRP: \$560.00)
- Your choice of outdoor Ceremony location (The Chapel\* can be added for an additional fee)
- 60 White Americana Slatted folding chairs for the ceremony (Set-up/Set-down not included)
- Signing Table and 2 Chairs
- Your choice of Reception location/tent option
- Chosen Tent or Marquee Option (Set-Up/Set-Down completed by supplier)
- 80 Natural Oak Cross-back Chairs for reception (Set-up/Set-down not included)
- 10 Standard Sized plastic trestle tables and white or beige tablecloths (Set-up/Set-down not included)
- Mains Power Access direct to tent site (10AMP and 15AMP connections available)
- Luxe Portable Powder room x 1 (services 100 people for 8 hours) - all weddings over 100 people will have extra amenities included in the quoted price for your capacity.
- Security (*all events over 30 people require qualified security guard/s for some duration of the event, groups of 80+ require 2 or more security guards*)
- Photography Locations around the estate- photographers are welcome to book a time to visit the estate prior to the day to scope locations.
- Venue Manager available onsite for the duration of your event
- Rubbish Removal

## **BEFORE THE DAY INCLUSIONS**

### **PLANNING SUPPORT**

While we don't provide a wedding planner, our venue manager and support staff are with you through your planning process. We arrange regular check-ins at 6 months, 3 months, and 4 weeks out from your wedding date and can connect with your chosen vendors (planners, stylists, caterers, florists, etc) to help arrange bump in and out times, deliveries, set up, and any access requirements so that your day runs as smoothly as possible.

### **SITE VISITS**

We are happy to arrange a number of site visits for you and your closest between booking and the date of your wedding. This helps with making your vision a reality when you can see your ideas in the actual space.

### **ITEM DROP OFF**

We want your day to be relaxing, without the added stress of making sure everything is delivered on time the day of. We can work with you to arrange a time for you to deliver items to our storage area before your wedding day.

### **CEREMONY REHEARSAL**

We welcome you to use your chosen spaces for a processional ceremony rehearsal on the morning of your wedding or on a pre-arranged date prior to the big day.

## **ON THE DAY INCLUSIONS**

### **EXCLUSIVE USE**

When you choose a ceremony and reception package at Maleny Country Estate you get exclusive access to the Estate function areas for 48 hours. If you add-on all accommodation for the weekend you have 48 hours of exclusive use of the entire Estate. Reception-only packages allow for exclusive use for the duration of your Reception event (typically 6:00pm-11:30pm) where any public accommodation guests will be restricted from the booked areas.

### **VENUE MANAGER ONSITE**

Our venue manager and support staff live onsite and are available for the duration of your event. We are available to help you coordinate with your vendors and ensure everything is running smoothly.

### **GUEST WELCOME**

On arrival, your guests will be welcomed by one of our friendly staff who will assist with parking and guiding your guests to your ceremony location.

### **POST CEREMONY**

Our expansive estate allows your guests to roam the grounds, play some tennis, lawn games, try their luck at table tennis and a game of pool, or simply relax while you and your wedding party get your photos. Set up a cocktail space or a break-out zone for them to enjoy and relax knowing everyone is entertained.

### **MALENY COUNTRY ESTATE AT NIGHT**

One of the many magical things about our location and estate is the limitation of "light noise". What this means is that the night sky is spectacular without the interruption of bright spotlights and commercial lighting. When you are feeling like the darkness is surrounding you, take a minute to look up and take in the crystal clear sky speckled with stars.

The estate is beautiful by night, take a moment away from the festivities to enjoy the terraced landscapes, gardens, and lit-up trees that add a little bit more magic to your day. To make it easier for your guests to find their way back to their cars or suites, let our friendly staff assist and guide you making sure all your guests get away safely.

---

# EXCLUSIONS

*What's NOT included in packages ...*

---

## **LIQUOR AND BEVERAGES**

See our Beverage Service page for information about BYO and Liquor Licensing at Maleny Country Estate. All beverage options are not included in the package price.

## **ACCOMMODATION**

We know that all couples are different and not everyone wants accommodation included. Accommodation has not been included in our packages but can be added to any booking. Please see our Accommodation Menu for options you can add on.

## **EQUIPMENT HIRE**

The hire of equipment not listed in the package inclusions list is the responsibility of the customer. The customer must organise vendor, quantities, style, delivery, and collection of any additional equipment.

## **PLANNING | STYLING | DECOR**

Wedding Planners, Stylists, Florist/Florals, and Décor are not included in the package pricing and are the responsibility of the customer. The customer must organise vendor, quantities, style, delivery, and collection of any additional equipment. We have a number of preferred suppliers and known suppliers we work with and would be happy to connect you with any vendors you may need.

## **CATERING AND EVENT STAFF**

Maleny Country Estate does not have onsite catering or catering/bar service staff, we want our customers to be able to bring in exactly what/who they want for their special day. All events serving alcohol must have RSA Certified staff to cater beverage service at their event.

## **LIGHTING**

Specialty lighting is not included in standard pricing. If any additional lighting is desired, please get in touch and we can discuss set-up/set-down costs and what availability we will have.

## **MUSIC AND ENTERTAINMENT**

All music and entertainment and associated equipment is the responsibility of the customer to engage, book, plan, organise and communicate with the venue for any event.

## **COLD ROOMS AND FREEZERS**

Cold rooms and freezers are not included in the package price. While our kitchen and amenities building is under construction these need to be arranged and provided by the customer.



---

## PREMIUM SPERRY TENT RECEPTIONS

---

Create the perfect setting for your reception with a premium Oyster Sperry tent. All Sperry tent options come with 4x 4 Dancefloor and a premium lighting package. Including, internal runs of warm white commercial quality fairy lights from the Sperry peaks to the perimeter poles and up-lights shining into the canopy to highlight the signature peaks and external festoon lighting installation. Delivery, set-up and set-down included.

Additional lighting and flooring options can be added for an additional fee.

Round Sperry Tent 10mx10m - Seated* Capacity 31-50 pax .....	\$15,400
Oyster Sperry Tent 10mx16m - Seated* Capacity 50-100 pax .....	\$17,600
Oyster Sperry Tent 10mx16m - Seated* Capacity 80-130 pax .....	\$18,600
Oyster Sperry Tent 14mx20m - Seated* Capacity 100-200 pax .....	\$19,600
Oyster Sperry Tent 14mx26m - Seated* Capacity 200-250pax .....	\$22,500

---

## PREMIUM TIPI TENT RECEPTIONS

---

Create the perfect setting and space for your reception with a premium Tipi tent. All Tipi tent options come with 4x 4 Dancefloor and a premium lighting package. Internal runs of warm white commercial quality fairy lights and an external festoon lighting installation.

*Additional lighting and flooring options can be added for an additional fee. Naked Tipi's also available, talk to us today about a custom quote.*

One Giant Tipi- Seated* Capacity 0-60 pax .....	\$15,300
Two Giant Tipis - Seated* Capacity 60-120 pax .....	\$17,900
Three Giant Tipis - Seated* Capacity 120-190 pax .....	\$20,600
Four Giant Tipis - Seated* Capacity 190-250 pax .....	\$24,300

*\*Seated capacities calculated as seated at standard rectangular long tables that seat 8-10 per table with dancefloor on the exterior of the marquee. Round tables may require a larger tent size.*

*For fully seated receptions we suggest going up a tent size to allow for free space within the marquee and the option to have your dancefloor on the inside. Talk to our team or your chosen stylist and planner today to discuss the best option for you.*



Photo: Lovebird Weddings | @lovebirdweddings



Photo: Jackson Grant Weddings | @jacksongrantweddings

---

## PREMIUM MARQUEE RECEPTIONS

---

All marquee options come with 4x 4 or 5 x 7m (for large groups) Dancefloor and a premium lighting package. Including, internal runs of warm white commercial quality fairy lights and external festoon lighting installation. Delivery, set-up, and set-down included. Additional lighting and flooring options can be added for an *additional fee*.

Clear or White Marquee 10mx12m- Seated* Capacity 40-80 pax	.....	\$16,600
Clear or White Marquee 10mx15m- Seated* Capacity 80-100 pax	.....	\$18,100
Clear or White Marquee 10mx18m- Seated* Capacity 100-120 pax	.....	\$19,600
Clear or White Marquee 10mx21m - Seated* Capacity 120-140 pax	.....	\$20,700
Clear or White Marquee 10mx24m - Seated* Capacity 140-160 pax	.....	\$22,600
Clear or White Marquee 10mx27m - Seated* Capacity 160-180 pax	.....	\$24,700
Clear or White Marquee 10mx30m - Seated* Capacity 180-200 pax	.....	\$26,500

*\*Seated capacities calculated as seated at standard rectangular long tables that seat 8-10 per table with dancefloor on the exterior of the marquee. Round tables may require a larger tent size. For larger groups or tent sizes, custom quotes are required.*

*For fully seated receptions we suggest going up a tent size to allow for free space within the marquee and the option to have your dancefloor on the inside. Talk to our team or your chosen stylist and planner today to discuss the best option for you.*

*Weighted marquees that are set up on the Terrace and not the lawn will have an added cost for the number of weights required. This will be advised during the quoting process.*





---

# MICRO-WEDDINGS

*Just your nearest and dearest*

---

We have the perfect spaces for you to create an intimate celebration for just your nearest and dearest.

You have complete creative control, work with your own chosen planner/stylists to create your perfect ceremony. You will have use of the Lawn, Courtyard or Garden Terrace for your event for 6 hours\*

Book a site visit to explore our many garden and outdoor options. Maximum guests, 11-30 pax (including children).

**Micro-Wedding** ..... \$10,000

## ***Inclusions:***

- 2 Night Stay in The Stone Cottage for the couple (2 guests max)
- \*Exclusive use of the booked space and its immediate grounds for 6 hours (including set-up/set-down time)
- 10m Round Luxe Sperry Tent or Choice of 10x9m White or Clear Marquee - set up on Lawn or Garden Terrace, including premium lighting inside the tent.
- Outdoor Ceremony Space - Garden Terrace, The Lawn/Lower Lawn
- 4 Standard Plastic Trestle Tables with White Table Cloths
- Use of 30 White Slatted Americana Chairs for Ceremony
- 30 Oak Cross-back Chairs for Reception
- Signing Table and 2 Chairs
- Lawn Games: Jenga, Tic-Tac-Toe, Cornhole, Connect 4, Ring Toss, Finska
- Maleny Country Estate Arbor
- Option for run-through on pre-arranged weekday prior to wedding day.
- Planning meeting with Venue Manager 3 months prior and 1 month prior to booked wedding date
- Photography Locations around the estate
- Rubbish Removal

## ***Optional Extras: (Additional Cost - email us for information)***

- Additional Americana Chairs (max: 60)
- Additional Cross-back Chairs (max: 60)
- Extra hours for event \$150/hr
- Discounted rate for Estate House add-on when booking with a Micro-Wedding package

*Not included: All other vendors and costs (caterer, florist, planner, RSA staff, stylist, etc), these are the responsibility of the couple.*

*Want to add something special to your micro-wedding? Get in touch with our team today to discuss your requirements for a custom date.*

---

# ELOPEMENTS

*an intimate affair*

---

Is your idea of the perfect wedding day just you and your partner and a very select few of your nearest and dearest?

Maleny Country Estate is the perfect venue for you. From our traditional stone cottage, 100+ year old fig trees, open paddocks and tree lined entryways the options are endless to create your magical and intimate setting to say "I Do".

**MAXIMUM GUESTS: 10 INCLUDING THE BELOW:**

- *Couple*
- *Celebrant*
- *Photographer*
- *Videographer*
- *Witnesses*
- *Select family members*

<b>TUESDAY -THURSDAY .....</b>	<b>\$3000</b>
<b>WEEKEND DATES .....</b>	<b>\$3500</b>

Eloperments can be held at any time from Tuesday to Thursday year-round. Hoping for a weekend date? We always keep some weekend slots available throughout the year, email us if you have a special request or special date.

**STANDARD ELOPEMENT CEREMONY INCLUSIONS:**

- *2 Nights Accommodation in The Stone Cottage for the couple (2 guests max.)*
- *Exclusive use of the booked space for 2 hours (extra hour for set-up/set-down)*
- *Signing Table and 2 Chairs*
- *10 Oak Cross Back Chairs*
- *Maleny Country Estate Arbor*
- *Choice of Chapel or Outdoor Space*
- *Extra hour for event \$150/hr*



Photo: Naturally Jek Photography | @naturallyjek.photography



---

# OUTDOOR CEREMONY ONLY

*let the hinterland's beauty do the heavy lifting*

---

The Estate boasts a number of outdoor lawn and garden settings, perfect for any sized ceremony. With views across the hinterland from all angles, you will be swept up by the raw and natural beauty.

You have complete creative control, and work with your own chosen planner/stylists to create your perfect ceremony. Book a site visit to explore our many garden and outdoor options. Maximum guests, 100 pax.

**Monday to Thursday ..... \$1200**  
**Friday to Sunday (mornings only in Off-Peak) ..... \$1500**

Ceremony Time: Between 11:00am-4:30pm

***Standard Outdoor Ceremony Inclusions:***

- *Exclusive use of the booked space and it's immediate grounds for 2 hours. (extra hour for set-up/set-down)*
- *Use of 60 White Slatted Americana Chairs*
- *Signing Table and 2 Chairs*
- *Option for Run through on pre-arranged weekday prior to wedding day.*

***Optional Extras: (Additional Cost - email us for information)***

- *Additional Americana Chairs (max: 60)*
- *Upgrade to Oak Cross-back Chairs (max qty 100)*
- *Lawn Games: Jenga, Tic-Tac-Toe, Cornhole, Connect 4, Ring Toss, Finska*
- *Extra hour for event \$150/hr*



Photo: Lauren Young Weddings | @laurenyoungweddings

---

# CHAPEL CEREMONY ONLY

*the perfect traditional setting*

---

Dreaming of a traditional chapel wedding with picture perfect panoramic views of the hinterland?

St Albertus Chapel, with sky high ceilings, lovingly hand carved timberwork, original stained-glass windows, and bell tower is the traditional ceremony space you have been looking for.

Giving old world European vibes, ring the bells after you say "I Do" and wander outside to be spoiled by hand laid stonework, surrounded by green lawns and manicured gardens. It's the perfect for backdrop for capturing those beautiful wedding shots.

St Albertus is a non-denominational chapel, seating 80 people with room for up to 100 with some standing or seated on second level (when available). Maximum guests 100.

**Monday to Thursday ..... \$1200**  
**Friday - Sunday (mornings only in Off-Peak) ..... \$1500**

Ceremony Time: Between 11:00am-4:30pm

***Standard Chapel Ceremony Inclusions:***

- *Exclusive use of the Chapel and it's immediate grounds for 2 hours (extra hour for set-up/set-down)*
- *Hand carved timber pews*
- *Signing Table and 2 Chairs*
- *Option for Run through on pre-arranged weekday prior to wedding day.*



Photo: Lauren Young Weddings | @laurenyoungweddings

---

# BEVERAGE SERVICE

*Time to pop the bubbly ...*

---

## **BYO OPTIONS**

Currently, Maleny Country Estate operates as a BYO Venue. Booked events are allowed to purchase and supply their own alcohol provided they have RSA-certified catering staff to serve alcohol responsibly.

## **BAR STAFF**

Maleny Country Estate does not have onsite catering or catering staff. All events serving alcohol must have RSA-certified staff to operate the service of alcohol. This is typically arranged through your catering vendor.

## **SECURITY STAFF**

All events held at Maleny Country Estate that have over 30 guests require RSA-certified and qualified security guards. The cost of security staff has been included in the package pricing. Contracted security guards, reserve the right to refuse and cut-off any drink service to drunk and or disorderly persons, and to remove them from site if/when required.

Security staff are here for the health and safety of all guests, staff, vendors, contractors and our property and livestock. Maleny Country Estate has a zero tolerance for abusive and aggressive behaviour and will not hesitate to evict or shut down events in any instance of this.



Photo: Lauren Young Weddings | @laurenyoungweddings



Photos: Life and Love Photography | @lifeandlovephotographybyleeb

---

## A FEW SMALL THINGS

### **NOISE AND CURFEW**

We operate on a "respect our neighbours" ethos here at Maleny Country Estate. We ask that all music is completely finished no later than 11:30pm and that any music with amplified base etc is turned off by 10:30pm.

At this time, if you are not quite ready to call the festivities to an end, any guests who have booked onsite accommodation and if you have included The Estate House in your package, are welcome to return back to the Lower Estate House, where you can continue on for a drink, a dance or a game of pool. It's the perfect communal setting for you to wind the night down or continue on to welcome the next morning if you wish.

### **GUEST TRANSPORT**

All guests arriving by car and bus and not booked in onsite accommodation, must be offsite by 11:45pm. We suggest that if arranging shuttle buses for guests that you organise a site inspection with your chosen transport provider before the date of the event.

### **PARKING**

There is ample onsite parking for guests in our parking space and the overflow paddock, which is signed on-site. No cars are allowed to park on Reesville Road and all guests and staff must park in nominated areas and bays.

### **PETS**

We love pets and are happy to discuss having your furry friends as part of your Ceremony, however, they cannot stay onsite or in our accommodation suites and must have an allocated carer who will bring them to the Ceremony and take them once it is finished. They cannot stay for your Reception.

---

# FAQ'S

---

## **CAN I BRING MY PET?**

We love pets and are happy to discuss having your furry friends as part of your Ceremony, however, they cannot stay onsite or in our accommodation suites. Our beautiful estate is also home to a large number of native wildlife including wallaby, echidna, deer, an array of birdlife, and a very healthy koala habitat. The presence of domestic animals (especially dogs and cats) threatens their habitat and forces them to abandon their homes and their young. For this reason, we do not allow pets onsite outside of the Ceremony start and finish times.

## **CAN I JUST HAVE MY WEDDING HERE WITHOUT BOOKING ACCOMMODATION?**

Yes, of course. Get in touch with our team today to discuss a custom quote.

## **I'VE BOOKED A VENUE FOR MY WEDDING, CAN I BOOK ACCOMMODATION ONLY?**

Yes, absolutely. See our Accommodation Menu for package options or get in touch with our team to discuss booking options.

## **CAN I ARRIVE BY HELICOPTER?**

Yes, we love it when our guests get a little fancy. Get in touch with our team to discuss pricing and arrangements.

## **CAN I BRING FOOD TRUCKS?**

Yes, you can choose exactly the vendors you want at your wedding. Our reception locations are set up with power and water to accommodate all types of catering options.

## **DO YOU HAVE AN ONSITE COMMERCIAL KITCHEN?**

Not yet. This is phase three of our upgrade projects but is not currently available. 2025/2026 is the current timeline for that project. Not to worry though, there are so many mobile catering vendors who service this region and are fully set up to cater to any size wedding party.

## **DO YOU HAVE A COOLROOM ONSITE?**

No we do not. We can however source one for you and add this to your invoice.

## **CAN WE CAMP OR BRING CARAVANS TO THE ESTATE?**

No, unfortunately, you cannot set up tents or any caravans onsite. If you have an overflow of guests we can help put you in touch with other Air BnB's in the direct area.



---

# FINE PRINT

*We respect our land, wildlife and livestock*

---

## **BANNED ITEMS**

Part of the beauty of living in such a magical location is nature and wildlife share this paradise with us. We respect our local wildlife and their habitats.

We also operate as a working cattle farm and have a number of horses, ponies and chickens around the estate. For these reasons we have a few items on our banned list.

### **CONFETTI**

Confetti even when listed as bio-degradable can take months to breakdown and in most cases causes upset to soil quality and affects regrowth of grass and plants. There are two options we allow; Rice paper confetti and certified freeze-dried petal confetti. Talk to us about approved products and if you are unsure get in touch and we can investigate the product and supplier.

### **FIREWORKS**

Traditional fireworks are strictly banned at Maleny Country Estate. This is for the safety of our livestock. Loud noises, flames, and shock can cause distress and erratic and harmful behaviour. We are happy to discuss the use of silent fireworks and controlled displays with you and your vendor.

Additional Note: Our property is situated in a bushfire zone, there are times of the year that strict fire bans are imposed. Fireworks will only be considered in line with current and local fire ban regulations.

### **SMOKING**

Smoking is only permitted in zoned areas during the event. No dumping of cigarette butts anywhere but in the dedicated ashtrays. Being in a bushfire zone it only takes a single cigarette butt and light breeze to cause a bushfire. Fines apply, please read our Terms and Conditions available on our website.

## **ALL WEDDINGS**

Due to the size and locations of our event spaces, ALL weddings and events with more than 30 people held at Maleny Country Estate must have a hired/dedicated event planner. The planner is responsible for all communication and arrangements for different vendors coming to and from the estate, on the day coordination. Our team can help to partner you with some of the best planning teams in the region.

All events held at Maleny Country Estate must provide a full run sheet for the event date at least 4 weeks prior to date. This run sheet must include, all vendors (with contact name, company, email and phone number), bump-in/bump-out times, delivery schedule, access requirements, equipment storage requirements. Contact us for an easy to use template.

## **BOOKING FEE AND SECURITY DEPOSITS**

A non-refundable booking fee of \$1000 is required to confirm your wedding date. This is applied to your total package price not as an additional cost. Tentative bookings are held for 5 days from the date of request and then made available to other customers if the booking fee is not paid.

A Security Deposit for every event held at Maleny Country Estate will be required, the value is dependent on your event. This is payable 30 days prior to the event date and will be refunded 7 days after the event date, less any applicable damages, fines, or fees, which will be invoiced.

## **PROGRESS PAYMENTS**

Progress payments are due throughout the period from booking up to the date of your wedding. Progress payments are non-refundable once paid and cannot be applied to an amended booking date unless written approval is provided by the venue.

### **2024 WEDDINGS**

- Booking Fee - \$500 non-refundable payment
- Deposit for Tent Hire: 20-30% - confirmed at booking
- 6 Month Progress Payment - 25% of the total package cost
- 3 Month Progress Payment - 25% of the total package cost
- 4 Week Progress Payment - Total remaining amount outstanding of the total package cost

### **JANUARY 2025 ONWARD**

- Booking Fee - \$1000 non-refundable payment
- 12 Month Progress Payment - 25% of the total package cost
- 6 Month Progress Payment - 25% of the total package cost
- 3 Month Progress Payment - 25% of the total package cost
- 4 Week Progress Payment - Total remaining amount outstanding of the total package cost

## **PRICE INCREASES**

Price increases are reviewed annually and applied based on the date of the wedding. Typically, price increases are applied from July 1st of each year and fall in the range of 3-5% increase. Our team will confirm any impact of price changes before your booking confirmation is processed. Total cost is only confirmed once a booking fee has been received and a formal quote has been signed and received by Maleny Country Estate management.

## **CHANGE OF DATE / TRANSFERS**

Requests for date changes and transfers are not guaranteed and a non-refundable re-booking fee/administration fee of \$500 is applied.

Transfers are not arranged by, nor the responsibility of the venue. Should you wish to transfer your booking to another couple the event will need to be paid in full by the original customer and a \$500 administration fee paid. Any financial arrangements made between couples transferring are to be managed privately and outside of the venue. We take no responsibility or liability for arrangements made outside of our signed contract with the original couple and no transfers will be approved without payment in full and new contracts signed.

## **PHOTOGRAPHY AND VIDEOGRAPHY**

Please see Section 21 - Photos and Videos - of our Terms and Conditions relating to the use and reproduction of images and videos taken, tagged, and posted throughout your event. Maleny Country Estate will for certain events, coordinate with the customer if we would like to have any marketing/content photography or videography taken by our own vendors/staff throughout your event.

## **TERMS AND CONDITIONS**

All wedding and event bookings at Maleny Country Estate are subject to our standard Terms and Conditions, sent to every customer prior to booking confirmation. Please make sure you read and understand these T&C's prior to booking, Maleny Country Estate reserves the right to have any guest, event or group of persons removed from the Estate should these conditions be broken at any time prior or during your confirmed event date. Fines may apply.

