

FREYCINET
LODGE
ELOPEMENT
PACKAGE

Elope

in wilderness



FREYCINET LODGE

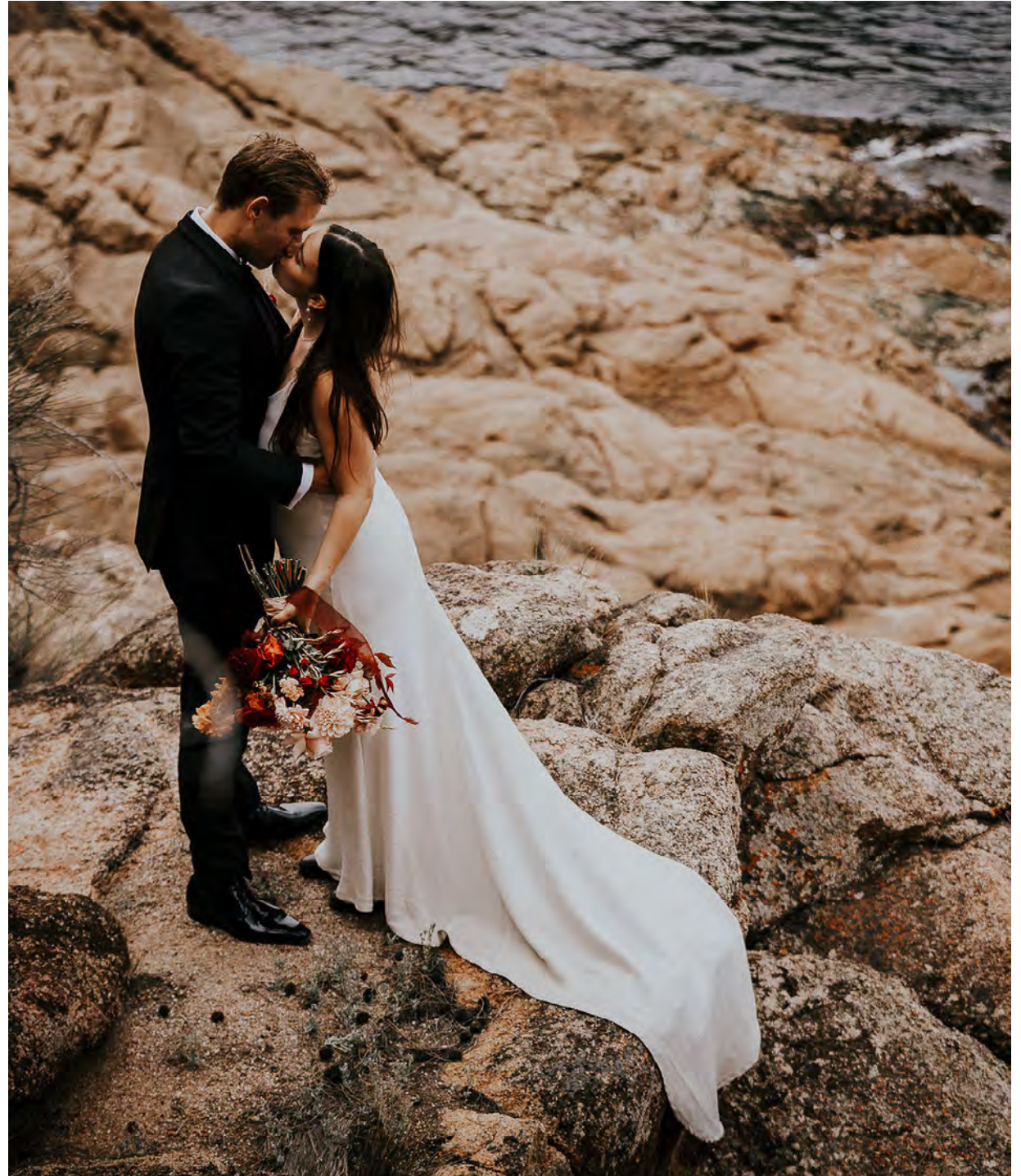


Elopement package

Tasmanians have a long-held love story with Freycinet Peninsula. Its jewel-coloured water, pristine beaches, Aboriginal history and mighty mountain peaks have drawn visitors for generations.

Apart from the obvious, it is sometimes hard to define why it's so special here... why it makes you feel so peaceful and relaxed. From the moment you arrive at the Lodge, the everyday starts to fade and you become one with the wild, immersed in our coastal eco retreat.

Head to the coast, escape the ordinary and elope in the natural grounded elegance of Freycinet National Park, with the breathtaking ancient granite peaks as your backdrop.





Elopement package

Packages are priced at \$3604.50 in peak wedding season.

Please ask us for a quote tailored to your specific dates.

Create the next chapter of your love story in the grounded elegance of Freycinet Lodge. Elope in the wild of the national park setting before relaxing in the comfort of your Coastal Pavilion.

Inclusions:

- **Two nights' accommodation** in a Coastal Pavilion
- **Daily breakfast** in The Bay Restaurant or continental hamper delivered to your Coastal Pavilion
- **Welcome bottle of Tasmanian sparkling wine** and complimentary mini bar
- **Local celebrant, legal paperwork**, unique design of ceremony to suit you and printed memento
- **National Parks and Wildlife permission** and permit for your ceremony and photos within the park
- **Simple ceremony set up** and dedicated staff member for 2 hours
- **Two glasses of Tasmanian sparkling wine** at ceremony
- **Private four course wedding night dinner at the Lodge jetty landing** or your Coastal Pavilion including a bottle of premium Tasmanian wine. Jetty availability is seasonal
- **Wedding night turn-down service** including night-cap of Tasmanian whisky, locally hand crafted chocolates and Artemis Rose massage oil & room mist
- **Tasmanian cheese plate** to enjoy during your stay
- **National Parks Pass** valid for one vehicle for two months
- **A thank you gift** from us as a reminder of your special time at Freycinet Lodge

Our packages are designed to be as flexible as possible to suit your needs. Please discuss with us how you would like to tailor your package.

This package is for two people. It can be expanded to include a small group of up to 16. Additional extras are detailed on page 9. For groups over 16 people we recommend our Traditional Wedding Package.





Ceremony locations

Your ceremony should be unique and personal to you. We offer multiple locations within the national park and our property. Each location is accessible on foot from the Lodge. For those visiting us for the first time we allow the flexibility of viewing the ceremony locations when you arrive on the day prior to your ceremony. We'll arrange a tête-à-tête that evening in your Coastal Pavilion to confirm your selection.

Honeymoon Bay

A short four minute walk from the Lodge along a coastal path will bring you to Honeymoon Bay. This small sheltered bay-within-a-bay is an absolute treasure. Exchange vows with the sand beneath your feet or atop an ancient pink granite boulder with the Hazards mountain range as your backdrop.

Richardson's Beach

Richardson's Beach is easily accessible from the Lodge via a short flight of steps. This beautiful 1km curved beach offers sprawling sand and water views with the iconic Hazards mountains in the background. This beach is the perfect option for larger groups or those who need a more expansive area.

Freycinet Lodge jetty landing

The jetty landing is a private little alcove linked to the jetty. It offers stunning views of the pink granite coastline, the shallow jewel-coloured waters, Great Oyster Bay and the mountains. Due to the size of the landing, this option is best suited to couples only for ceremonies between 11am to 2pm or after 3pm.

Your Coastal Pavilion

Share your special moment amongst the coastal bushland in the privacy and grounded elegance of your Coastal Pavilion. Your pavilion's large deck offers the possibility of either expansive views over Great Oyster Bay or water views through the trees to the shoreline just metres from your deck. These options are best suited to small elopement parties.

Freycinet Lodge is nestled within Freycinet National Park – a 2.5 hour drive from Hobart.

National park information

Special permission must be granted by Tasmanian Parks and Wildlife Service to marry within the national park. We will make these arrangements on your behalf.

All additional guests attending your elopement will need their own parks passes. Parks passes can be purchased at Freycinet Lodge, the Freycinet National Park Visitors Centre, most accredited Tasmanian Travel Information Centres and online at passes.parks.tas.gov.au.

Only one bouquet and one boutonniere are allowed per ceremony party. It is important that we leave the park as we find it, by removing any trace of our visit. Confetti, rose petals and similar products are not permitted. Any floral arrangements or decorations brought into the park must be taken with you after the ceremony.

The wildlife here is abundant. Curious native animals may make an appearance during your visit. Please

respect and protect these animals by keeping your distance and not feeding them. The park is also home to Aboriginal sites and other locations of significant cultural significance. We kindly ask that you respect these sites and ensure that all rocks, plants, sand and other natural objects are left in the park as you find them.



Optional extras for two

Just for the two of you. Whether you choose to relax at the hotel or explore the wilderness, we have your food and beverage options covered

Picnic hampers

Walkers Pack

Salad wrap with choice of smoked salmon, leg ham or brie.

\$20.00pp

Includes wrap, lodge-made cookie and a piece of fresh fruit

Picnic Hamper

Lodge-made bread roll, Tasmanian selection of cured meat including smoked chicken, prosciutto and salami, Lodge-baked goods including chocolate brownie and cookie (chef's selection), Tasmanian cheese selection including brie, cheddar, blue with Eureka quince paste and crackers, antipasto including pickled onion, semi dried tomato and marinated olives.

\$45.00pp

Tasmanian tastings at Hazards Bar and Lounge

Self-guided tastings that take you a on a trip around Tasmania

Tasmanian wine tasting

\$38.00

Tasmanian gin tasting

\$48.00

Tasmanian whisky tasting

\$68.00

Platters

Charcuterie

Kunzea-smoked chicken breast, wallaby and pepper salami, prosciutto, pickled onion, cornichons, piccalilli, Sopressa salami, honey mustard, lodge-baked focaccia

\$45.00

Tassie Seafood

Melshell oysters, Tassal cold smoked salmon, Stanley pickled octopus, local calamari, pickled Spring Bay mussels, shaved fennel and cucumber salad

\$45.00

Cheese Selection

Selection of Tasmanian cheeses, Eureka quince paste, Swansea walnuts, lavoche and crackers

\$45.00

Vegetarian

Grilled eggplant, zucchini, capsicum, marinated olives, semi dried tomatoes, organic smoked tofu with fermented pesto, olive tapenade, lodge-baked fig and walnut bread

\$35.00

Fruit

A selection of seasonal fruits

\$30.00

Preparation room

Additional accommodation room

For the traditionalists we can offer an additional room for your partner to get ready. Available from mid-morning until the start of your ceremony.

\$165.00



Optional extras for groups

Dining options

Choose from an inspired menu that showcases the finest regional produce, including some of the best seafood in Tasmania. Complement your meal with local vintage and award winning wines.

Pre-ceremony

Pre-ceremony light lunch platters **\$150.00**

Two platters to be shared amongst the bridal party, up to 6 people. Features savoury items, cheese and seasonal fruit

Post-ceremony and pre-dinner

Entertain your guests during your photography session, enjoy celebratory toasts before dinner or opt out of a traditional sit down meal. Platters and canapes can be enjoyed on the main Freycinet Lodge deck overlooking Great Oyster Bay and at all dining locations except for Bay Restaurant.

Canapes

Canapes (4 pieces) **\$24.00pp**

Select from hot and cold canapes or work with us to create your own.

Substantial canape items **\$18.00pp**

Platters

Each platter serves 3-4 people as a light snack

Charcuterie

\$45.00

Kunzea-smoked chicken breast, wallaby and pepper salami, prosciutto, pickled onion, cornichons, piccalilli, Sopressa salami, honey mustard, lodge-baked focaccia

Tassie Seafood

\$45.00

Melshell oysters, Tassal cold smoked salmon, Stanley pickled octopus, local calamari, pickled Spring Bay mussels, shaved fennel and cucumber salad

Cheese selection

\$45.00

Selection of Tasmanian cheeses, Eureka quince paste, Swansea walnuts, lavoche and crackers

Vegetarian

\$35.00

Grilled eggplant, zucchini, capsicum, marinated olives, semi dried tomatoes, organic smoked tofu with fermented pesto, olive tapenade, lodge-baked fig and walnut bread

Fruit

\$30.00

A selection of seasonal fruits

Lunch and dinner

When dining in The Bay Restaurant, the a la carte menu and the menu options listed below are available. If you are dining outside of the restaurant, the options listed below are available.

2 course (group dining a-la-carte menu) \$65.00pp

3 course (group dining a-la-carte menu) \$90.00pp

4 course (set menu) \$100.00pp

6 course degustation including welcome beverage \$185.00pp

2 course shared platters \$75.00pp

3 course shared platters \$100.00pp

Cakage \$5.00pp

Beverages

Select from an extensive beverage list including award winning Tasmanian wines, locally brewed craft beers and spirits. Costing is based on consumption and you can either pre-select a small list of beverages or leave the entire list open to your guests.



Optional extras for groups

Dining locations

From the elegant atmosphere of The Bay Restaurant to secluded romantic outdoor dining, we offer a range of dining locations to suit your style.

The Bay Restaurant

Located inside the main lodge building The Bay Restaurant is elegant and spacious. Available for both lunch and dinner bookings on your wedding day, your table will be set with white table cloths, grey napkins, Bay Restaurant cutlery and crockery along with stylish touches such as bunches of native greenery and candles. You are welcome to include your own personal styling. Lunch bookings are placed in the lower section of the restaurant with views of Great Oyster Bay and dinner bookings are usually placed in the upper section next to the grand stone fireplace.

Dove Function Room

We invite you to engage the services of a wedding stylist to transform this blank canvas into your own personal style. The Dove Room features natural light, direct access to the adjoining courtyard and sufficient room for added extras like a dancefloor. We will set this room for you with white table cloths, grey napkins, white or black chair covers, Bay Restaurant cutlery and crockery along with stylish touches added such as bunches of native greenery and candles. Additional set up including dancefloor, wine barrel cake table and gift table is available for \$250. The Dove Room is 8 x 6.5 metres and we recommend this space not be used for small groups.

Courtyard

Open air dining with expansive views of Great Oyster Bay, the courtyard is available for lunch year-round and fine-weather evening dining during the months of November to April. The Dove Room or The Bay Restaurant will be your secondary option in the event of inclement weather.

Jetty Landing

This private dining experience is available for groups up to 7 people when dining on the 4 or 6 course menu. A private alcove linked to the jetty and nestled amongst the native bushland while overlooking Great Oyster Bay. The jetty landing is available for lunch year-round and dinner during the months of November to April.

Coastal Pavilion deck

This private dining experience is available for groups up to 8 people when dining on the 4 or 6 course menu. Drinks and nibbles can be catered for a larger group and beverages must be selected and are self-service. The deck of your Coastal Pavilion offers the possibility of either expansive views over Great Oyster Bay or water views through the trees to the shoreline just metres away. Your deck is available for lunch, post-ceremony and pre-dinner gatherings year-round. Private dinners can be accommodated during the months of November to April.

Wait staff are available for \$45 per hour.





Hotel facilities

Overlooking the blue waters of Great Oyster Bay and with the rugged Hazards mountain range as your backdrop, the location of Freycinet Lodge in Freycinet National Park is second-to-none.

- Two dining outlets including Richardson's Bistro and the award-winning Bay Restaurant
- Hazards Bar and Lounge
- Complimentary guest parking and Wi-Fi
- Expansive wrap-a round deck at main Lodge. Perfect for cocktails at sunset.
- In-room massages
- Gift shop
- Guest laundry including garment steamer delivered to your room
- E-bike hire and Freycinet Walking Tours onsite
- Guest Experience Manager offering experience information and bookings
- 'Fly and Drive' options with complimentary Friendly Beaches airstrip transfers

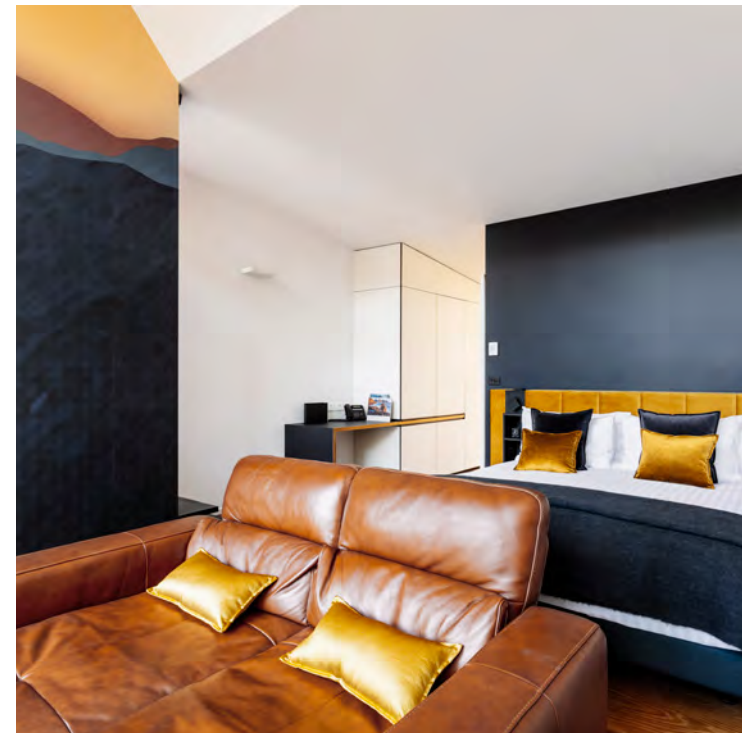




Accommodation

Your package includes two nights' accommodation in our award-winning Coastal Pavilions. Offering grounded elegance within a natural setting, these rooms boast an outdoor bath, separate living area and expansive deck. We provide a garment steamer, full-length mirror, hairdryer and hair straightener. The pavilions also include a turn-down service and complimentary breakfast and mini bar.

Bringing the kids, friends or family? We offer a variety of accommodation options to suit your guests. From One Room Cabins, Family Cabins to contemporary Mountain Terrace Rooms, Premier Spa Cabins and Coastal Pavilions.





Contact details

Freycinet National Park,
Coles Bay Rd, Coles Bay TAS 7215
+61 3 6256 7222
elope@freycinetlodge.com.au



FREYCINET LODGE