

VALID 2017

Weddings



WILDMAN WILDERNESS
LODGE



WILDMAN WILDERNESS LODGE

YOUR *SPECIAL* DAY

Located in the majestic Mary River National Park wetlands of the Northern Territory, Wildman Wilderness Lodge is an unforgettable experience offering a picturesque and unique venue for a memorable wedding day.

Teeming with wildlife it is a world far-removed from your own, yet with all the modern comforts of great accommodation and delicious meals accompanied by fine wines.

From its premium comforts to the untamed surrounds, Wildman Wilderness Lodge can provide a wedding celebration like no other, tailored to meet your expectations and ensure a truly special day.

Index

Your Special Day	2
Relaxed Location	3
Room type - Habitat	4
Room type - Safari Tent	5
The Lodge	6
Ceremony Locations	7
Reception Locations	8
The Menu	9
Menu Suggestions	10
Tour Options	11
Package Suggestions	12
Getting to Wildman	13
Rates	14
Contact Us	15
Booking Terms and Conditions	16

At Wildman Wilderness Lodge our goal is to ensure your wedding is a memorable and treasured event.





RELAXED SURROUNDS

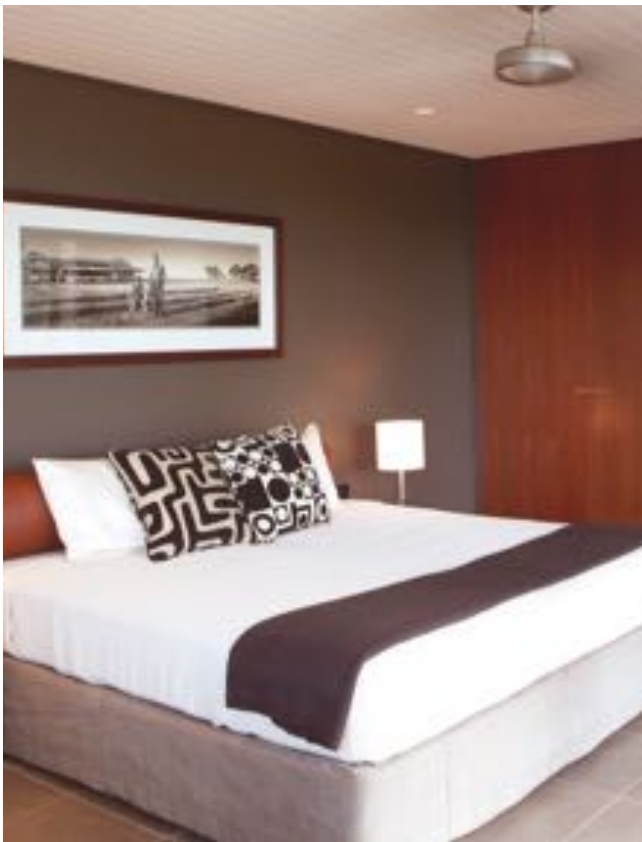
Wildman Wilderness Lodge is the perfect setting for the bride and groom who want an outback adventure and the ultimate romantic experience.

With our professional team who are committed to delivering a high standard of service, we can offer the exclusive use of the lodge for large family affairs, or a private and intimate experience for the romantic types..

Wedding celebrants, photographers, beauticians and stunning flower arrangements are all just part of the service. Simply let us know what you require to make your day special and we will do the rest.

When you stay at Wildman you can choose from either the air-conditioned self contained habitat, or the luxe safari tent, which is also suitable for families.

HABITAT



Our indulgent, romantic 'Habitats' offer unexpected comfort in this wilderness location. Surrounded by breathtaking nature, these well-appointed, beautifully designed freestanding cabins offer a soothing luxury. In air-conditioned comfort, with luxury bedding, premium furnishings and en suite bathrooms, the Habitats are the perfect respite after a day of adventure in the wilderness.

The Habitat can accommodate up to 2 people.

LUXE SAFARI TENT



An alternative option for those who seek a bit more adventure (needless to say, in style), this truly luxe 'camping' experience is a premium offering. Each fan-cooled tent is surprisingly spacious at 50m² and comes complete with en suite bathroom. Natural colors and materials from the region have been utilised and reflect the surrounding environment, the entire experience providing a grounded closeness to the wilderness with all the romance of the ultimate hideaway.

Safari tents can accommodate up to five people (2 adults + 3 children, or 3 adults + 2 children).

At Wildman Wilderness Lodge our goal is to ensure your wedding day is a memorable and treasured event.



OUTBACK AUSTRALIA

THE *LAST* FRONTIER

When the time comes for guests to relax after a full day of activities, the main lodge is available to enjoy with a restaurant, bar, lounge, and swimming pool, making it perfect for special events. The world-class communal lodge is the focal point of the resort and epitomises Top End architecture. Designed for maximum comfort throughout the seasons and featuring a spacious lounge bar, it's the ideal place to wind down in the late afternoon.

The atmosphere is relaxed and informal with a feeling of comfort and quality.

The building's design allows for the free flow of air throughout. It is fully screened and fan-cooled. The spacious lounge bar is air-conditioned.



PHOTOS BY ISABELLA MOORE & MIKE ANNESE

At Wildman Wilderness Lodge we offer a number of romantic outdoor venues perfectly suited to the wedding ceremony.

Choose from a location inspired by nature or hold your ceremony in or around the lodge:

On the floodplains

- Amongst the termite mounds with the Mary River Floodplains as your backdrop

Under our shade pagoda

- Our 11m x 11m outdoor shade tent provides a convenient and relaxed ceremony location.

Leichardt Point

- This location offers amazing views of the wetlands and is spectacular at sunset.

Or simply choose your own location and be inspired by mother nature.

LOCATION LOCATION

A UNIQUE VENUE FOR A MEMORABLE DAY

A DISTINCTIVE EXPERIENCE

Showcasing the best seasonal produce Australia has to offer, Wildman's delicious array of food and beverages are matched only by the stunning views.

RECEPTION LOCATIONS

Choose from one of our many locations for your reception. It can be as relaxed or formal as you like.

The Lodge

Available for exclusive use, the Lodge restaurant, bar area and outside deck caters for groups up to 90 guests.

Conference Room

The private air-conditioned function room overlooks the Mary River National Park and offers a private location for groups up to 40 guests.

Outdoors

The outdoor deck at Wildman Wilderness lodge provides the perfect location for a casual wedding. Surrounded by the beauty of the floodplains this open-air venue is perfect for up to 75 people. There is seating around our fire pit, which creates a romantic atmosphere against the Northern Territory sunset. This venue works well with our outdoor buffet menu.





INDIGENOUS FLAVOURS

LOCAL *AUSTRALIAN* PRODUCE

With our Head Chef Michael Collins at the helm, we have designed a menu that includes only Australian and Territory produce such as Barramundi, local beef, crocodile and buffalo, infused with the finest Australian indigenous bush ingredients, such as lemon myrtle, pepperberry and bush tomatoes.

To match these delicacies are our carefully selected Australian wines and beers, hand-picked from some of the finest vineyards and breweries around Australia.



MENU IDEAS

SET DINNER SAMPLER MENU

Suitable for restaurant and conference room:

Entrée

Atlantic salmon sashimi with blood orange and basil

Kangaroo carpaccio with truffle dressing, pecorino and lime

Grilled crocodile with fennel, saffron and grapefruit dressing

Main

Pan fried gold band snapper on a pearl couscous salad and mint yoghurt

Grilled scotch fillet with puree potato and mushroom sauce

Roasted pork rack on braised black beans with bacon and mustard cream

Dessert

Set blueberry consomme with pineapple and kiwifruit cream

Espresso panacotta with drunken cherries and a chocolate crisp

BUFFET SAMPLER MENU

Suitable for conference room, restaurant or deck:

Entrée

Barbecued chilli and garlic prawns

Territory inspired beef chicken and vegetable skewers

Gourmet mini sausages with home made tomato sauce

Hot

Pan seared Barramundi with capsicum salsa

Bush spiced eye fillet with red wine jus

Roast pork with homemade apple sauce

Corn on the cob grilled on the barbecue

Jacket potato with sour cream and chives

Salad

Potato salad with mustard seed dressing

Roast vegetable salad with salsa verde

Green salad with lemon vinaigrette

Dessert

Tropical Territory fruit salad with vanilla bean ice cream

Lemon cheesecake tarts

A selection of cheeses



TOURS

The wonders of nature take centre stage here at Wildman Wilderness Lodge. Teeming with exotic wildlife, there's action, adventure and excitement to be found from dawn until well into the evening in the most lush of environments. Surprise your guests with pre-booked tours, or let them purchase individually.

Full Day Kakadu Tour

Our Kakadu day tour gets an early start to travel to the world famous Kakadu National Park for a day of sightseeing, culture and adventure. \$275pp + \$40 ticket

Mary River Rockhole Cruise

This is an excellent opportunity to observe crocodiles, wetland birds and fantastic views across the vast Mary River floodplains. \$95pp

Home Billabong Cruise

Enjoy a one-hour cruise on our Home Billabong as the sun warms up and nature comes to life. \$65pp

Leichhardt Point Sundowners

Depart the Lodge 1hr before sunset and journey through the savannas to Leichhardt Point where we stop for refreshments as we watch the amazing sunset over the wetlands. \$65pp

Airboat Tour

Discover the Mary River Wetlands up close on an exhilarating 90 minutes tour by airboat. \$300pp

Brian Creek Bushwalk

Trek through Brian Creek, a patch of diverse monsoon rain forest that contrasts strongly with the surrounding woodlands. \$65pp

Dual Track Vehicle Sight Seeing

A truly unique way to view the scenery in this special part of the outback. Enjoy a 45 minute tour through the stringy bark savannah. \$120pp

Fishing Tour

Get up early for an opportunity to catch Australia's very own Barramundi. \$165pp

*We have put together 2 Reception Package ideas
to help you plan your special day.*



WEDDING PACKAGE OPTIONS TO INSPIRE

Package 1

2 hour beverage package including a selection of wine, beer, soft drinks and juice.

3 course alternate serve menu designed by our chef with your input.

Selection of tea and coffee available throughout the reception or served after dinner, as you wish.

Your wedding cake to be displayed, cut and served to guests following dinner.

Bridal table dressed in white, plus cake and gift tables.

Lectern will be provided.

Package 2

2 hour beverage package including a selection of wine, beer, soft drinks and juice.

Territory inspired hot and cold buffet where your guests can self serve and enjoy a range of hot dishes, seafood and gourmet salads.

Selection of tea and coffee available throughout the reception or served after dinner, as you wish.

Your wedding cake to be displayed, cut and served to guests following dinner.

Bridal table dressed in white, plus cake and gift tables.

A lectern will be provided.



LOCATION

Wildman Wilderness Lodge is located approximately half way between Darwin and Kakadu, 170km by road from Darwin City. Drive time from Darwin is less than two hours, along the sealed Arnhem Highway.

TRANSPORT OPTIONS

- * Self Drive: Hire a car and make your own way along this easy journey.
- * Wildman Shuttle Bus: Book our shuttle service for up to 11 people in our Toyota Hilux.



- * Small Charter Flight: Charter a small aircraft and land at the front of the lodge. Holds up to 4 people.

- * Charter Helicopter : Charter your own private helicopter.





ROOM RATES

Per night rate, including dinner (3 course a la carte selection) and buffet breakfast;

- Luxury Safari Tent, twin \$615
- Air-conditioned Habitat, twin \$769

Please note we have 15 Safari Tents and 10 habitats in total. Singles and supplement rates are available on request. Rates are applicable to 2017. Discounts may apply to shoulder season bookings, ie March, April, October and November.

CATERING

Wildman Wilderness Lodge can cater for 85 or more for lunch or dinner. For groups larger than 85 marquee hire is recommended.

Canapés

Canapés \$27 per person 1 hour canapé service (3 items per person). Only bookable with drinks package.

Canapés \$36 per person 1 hour canapé service (4 items per person). Only bookable with drinks package.

Picking Platter \$60 each Platter of antipastos, cheeses and meats, serves up to 4 people.

WEDDING RECEPTION

*3 Course Dinner, alternate drop \$30 supplement per person
2 options per course. Tea & Coffee included.

*3 Course Dinner, A La Carte \$45 supplement per person
2 options per course. Tea & Coffee included.

*Buffet \$25 supplement per person Buffet. Tea & Coffee included.

Serving your wedding cake Complimentary. Want to serve your wedding cake as a dessert? Our chef will cut and platter your wedding cake at no additional charge.

*prices may fluctuate depending on seasonal availability

Drinks Packages, range from \$39 - \$69 depending on selections. Please requests a wine list for our current items if you would like to consider. Drinks packages last 2 hours.

We have a fully licensed bar and should you prefer, your guests can purchase drinks individually and have these billed back to their room.

Please request a copy of our latest menu for our current offerings which are seasonal.

A bride in a white, sleeveless, lace-trimmed gown stands by a large window, looking out with a smile. The window offers a view of a golf course and a building with a thatched roof. The interior features wooden paneling and a leather armchair.

WE WANT YOUR WEDDING TO BE AN AMAZING EXPERIENCE IN AN EXTRAORDINARY LOCATION. THANK YOU FOR CONSIDERING WILDMAN WILDERNESS LODGE FOR YOUR SPECIAL DAY, AND PLEASE DO NOT HESITATE TO CALL US IF YOU HAVE FURTHER QUESTIONS OR REQUIRE ADDITIONAL PRICING.

WE LOOK FORWARD TO MEETING YOU, YOUR FAMILY AND FRIENDS. FOR MORE INFORMATION PLEASE CONTACT:

LISA GOODHAND
WILDMAN WILDERNESS LODGE
L.GOODHAND@WILDMAN.COM.AU
PHONE: +61 (08) 8978 8955

Terms & Conditions

Deposits: Confirmation of the booking will be provided with a contract and deposit invoice. To secure your booking the deposit of 20% of accommodation costs and signed contract must be returned within 7 days.

Final numbers: Guaranteed final numbers and signed event order must be provided 30 days prior to arrival.

Full Payment: Full payment is required no later than 30 days prior to arrival. Where additional items (including beverages) are charged on consumption, the account is to be settled at check-out.

All payments made via Credit Card will incur a 2% surcharge.

Cancellations: Cancellations made

60-31 days prior to arrival will incur a fee of 20% deposit paid

30-15 days prior to arrival will incur a fee of 50% of total booking costs

14-0 days prior to arrival will incur a fee of 100% of total booking cost

Times: Functions must conclude by 11.30pm

Weather: In the event of inclement weather we will arrange an alternative venue or activity which is within our control and mutually agreeable.

Menus: Seasonal or ingredients not available shall be replaced with a suitable seasonal alternative. Dietary requirements need to be advised at least 14 days prior to arrival to avoid disappointment.

Noise curfews: If non-exclusive use of the Lodge, live music must cease playing at 10pm

BYO: Wildman Wilderness lodge is a fully licensed premises.

Outside suppliers: All additional setup needs and suppliers required for the event must be preapproved by Wildman Wilderness Lodge. Materials not belonging to Wildman Wilderness Lodge should be removed at the conclusion of the event. No responsibility will be taken by the venue for any lost or damaged items.

Additional fees may apply to remove decorations or equipment left behind.

Beverage service: Wildman Wilderness Lodge operates a responsible service of alcohol practice.

Alcohol will not be served to patrons under the age of 18 years or to intoxicated guests.

Damages: Organisers are financially responsible for any damage sustained at Wildman Wilderness Lodge by the organiser, organiser's guests, invitees or other persons attending the event at Wildman Wilderness Lodge.

Smoking: Smoking is only permitted in designated smoking areas. Is not permitted anywhere indoors at Wildman Wilderness Lodge.

Cleaning: Additional cleaning costs may be incurred if your event requires more cleaning than what would reasonably be expected for an event of this kind.