



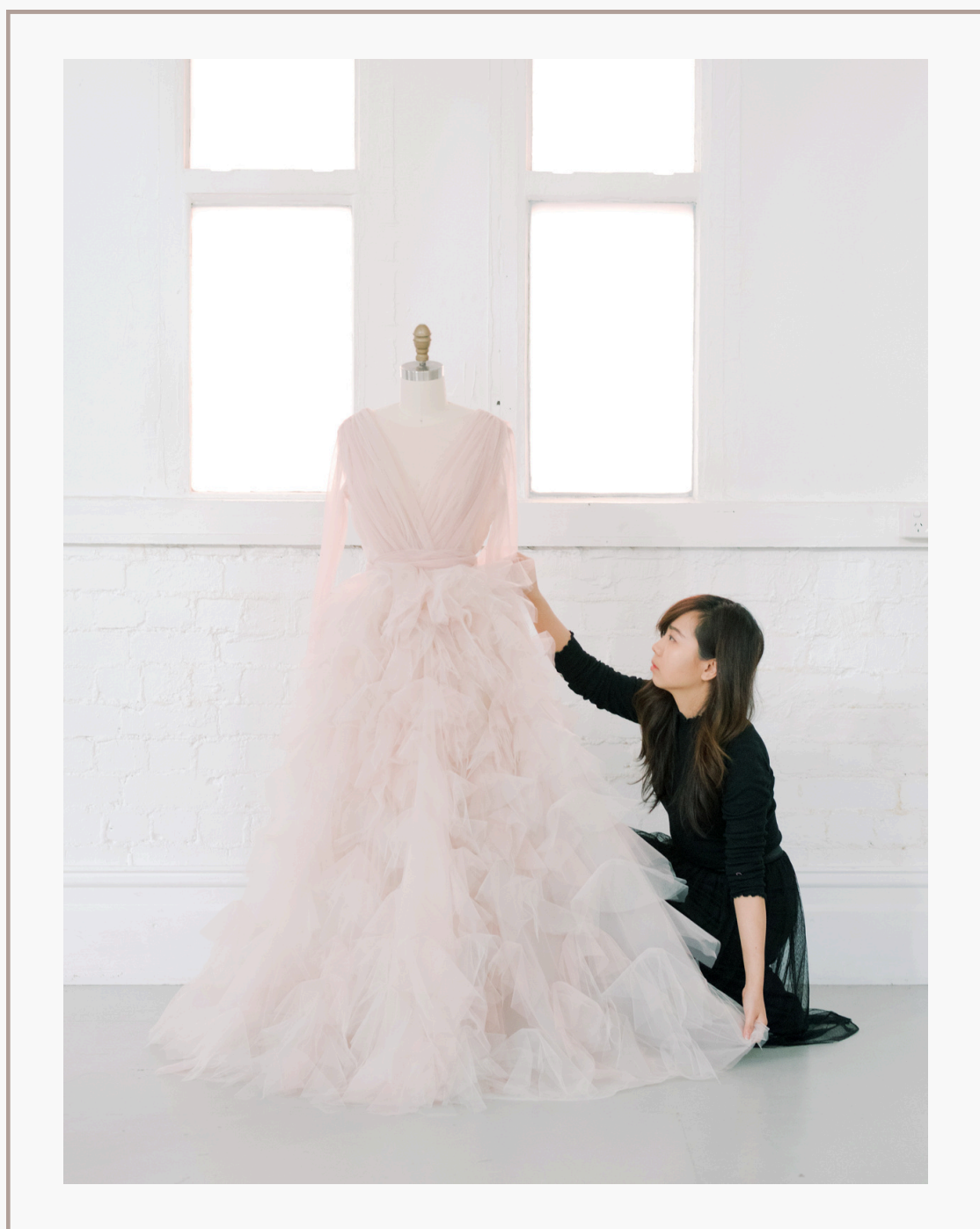
# SENI COUTURE

BLOSSOMS  
*Collection*

PRODUCT CATALOG

# TABLE OF CONTENTS

ABOUT US	03
COLLECTION INTRO	04
THE COLLECTION	06
CONTACT US	20



# ABOUT US

At SENI, we dedicate ourselves to crafting exquisite gowns that transform our clients into visions of elegance and beauty on their special day. Every gown is thoughtfully designed, meticulously handcrafted using high quality fabrics, through the mastery of Winny, our designer and founder based in Melbourne.

Our offerings include made-to-order collections, which can be purchased and tailored to individual sizes, or rented. For those seeking a truly personalized experience, we provide custom design services that turn your unique visions and dreams into stunning masterpieces.

A close-up photograph of a bouquet of flowers. The bouquet includes several large, multi-petaled roses in shades of light pink and peach, a white peony with a bright yellow center, and clusters of small blue hydrangea flowers. The background is a soft, out-of-focus light brown or tan color.

# BLOSSOMS

*"The earth laughs in flowers..."*

Ralph Waldo Emerson

This collection was inspired by the blooms in Spring, which were effortlessly beautiful, delicate and hopeful. As a metaphor to the spring blooms, the voluminous ruffles suggest formation of petals, soft tulle and intricate floral lace bring romance and otherworldly beauty to the collection.

SENI | BLOSSOMS COLLECTION

PRODUCT CATALOG

# BLOSSOMS



SENI | | BLOSSOMS COLLECTION

PRODUCT CATALOG



# LILAC GOWN

Crafted in a timeless column silhouette, this strapless tulle gown showcases ruffled accents around the neckline and arms, exuding a sense of romance.

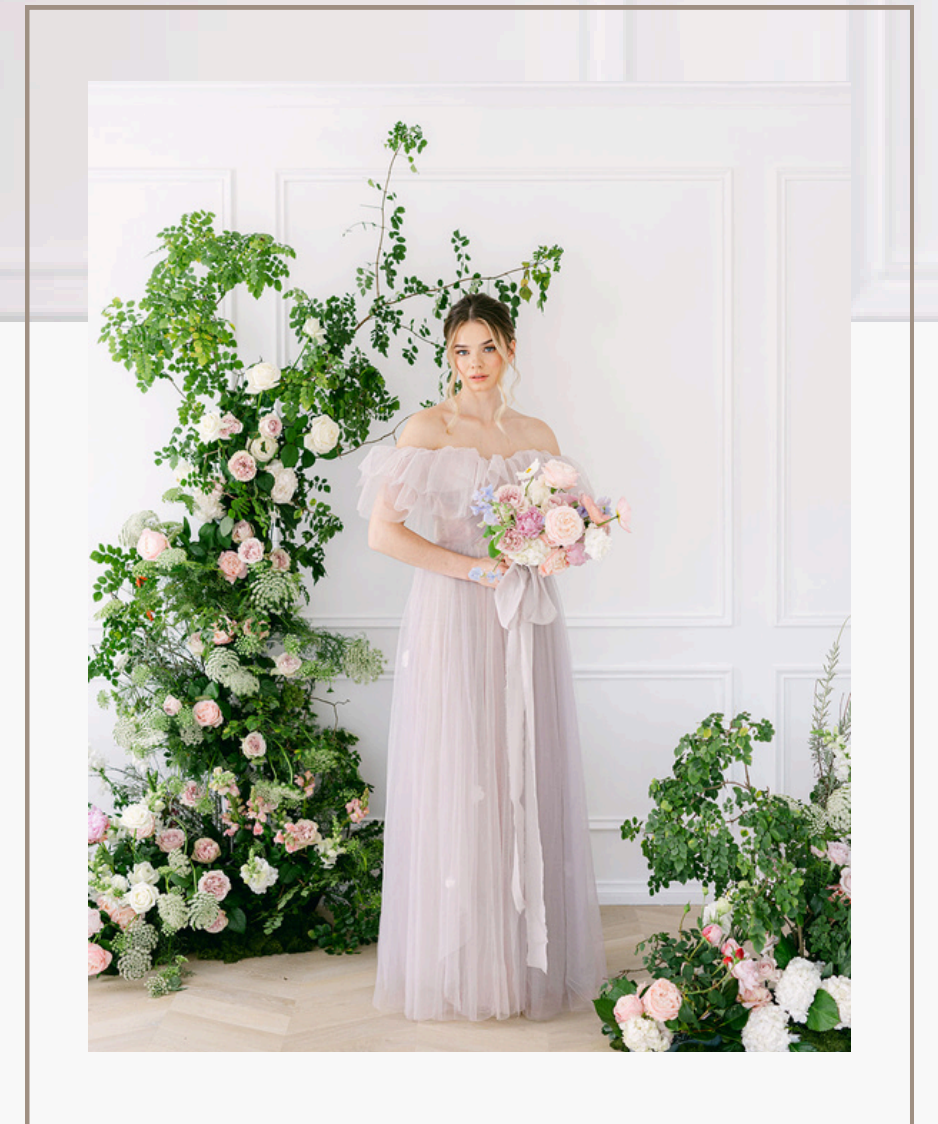
OFF-THE-SHOULDER | SEMI-SHEER | BONED BUSTIER BODICE | INTERNAL BELT WITH HOOK AND EYE | ADJUSTABLE BODICE BACK LACE CLOSURE | ZIP SKIRT CLOSURE

Rental Size : SMALL | AU6-8 | WAIST 65-74cm

Rental Price: \$495\* (4 days), \$940\* (8 days) | Custom-Order: \$3300

\*Rental price includes professional dry cleaning fee

SENI | BLOSSOMS COLLECTION



PRODUCT CATALOG



# LILAC GOWN

SENI | BLOSSOMS COLLECTION

PRODUCT CATALOG



# BLUEBELL GOWN

This gown boasts of 3D floral lace all over the bodice, complementing a full skirt made of layers of soft tulle for a dreamy romantic look. It comes with a detachable cape.

SLEEVELESS | SEMI SHEER | FULL LENGTH | SIDE ZIP CLOSURE |  
DETACHABLE CAPE

Rental Size : SMALL | AU6-8 | WAIST 65-74cm

Rental Price: \$480\* (4 days), \$910\* (8 days) | Custom-Order: \$3200

\*Rental Price includes professional dry cleaning fee

SENI | BLOSSOMS COLLECTION



PRODUCT CATALOG





BLUEBELL GOWN

SENI | BLOSSOMS COLLECTION

PRODUCT CATALOG



# LILY GOWN

This darling dress features a fitted bodice, which is complemented with a voluminous soft tulle skirt. The sparkling champagne floral lace would illuminate any occasion.

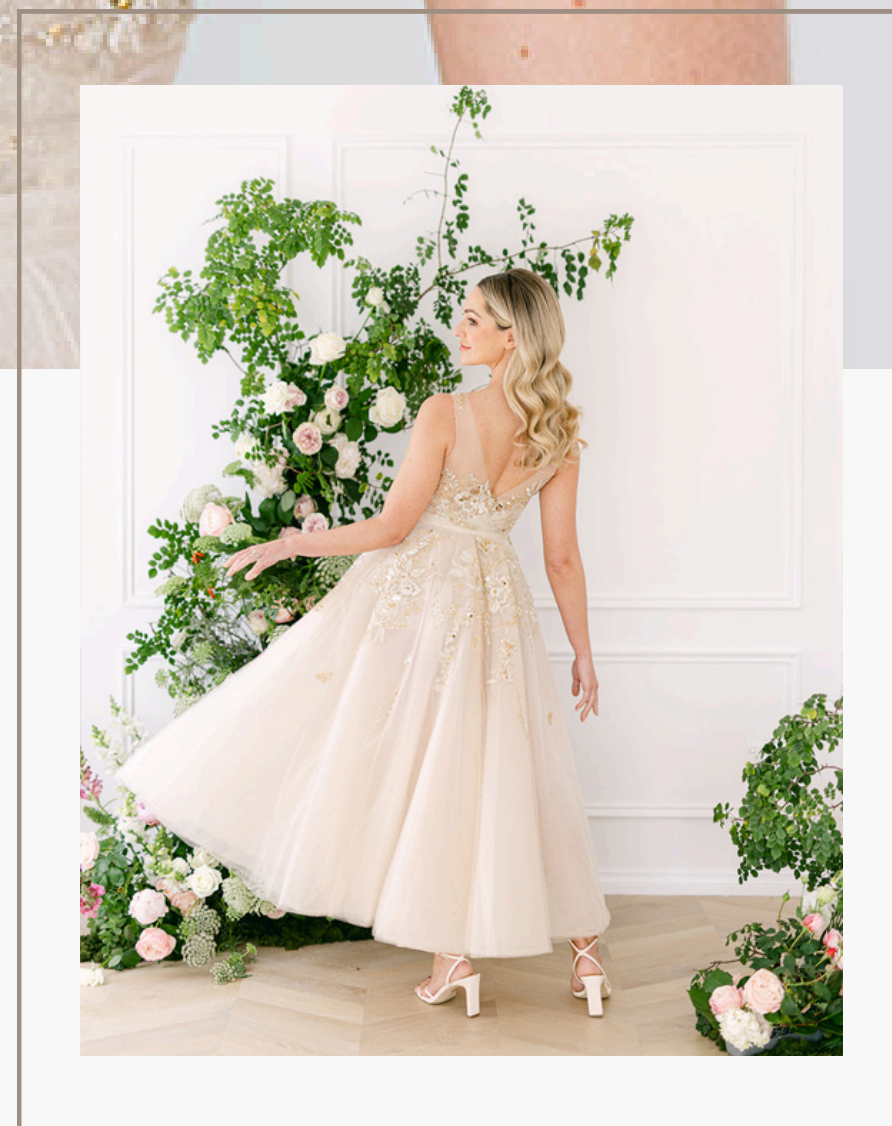
SLEEVELESS | ILLUSION NECKLINE | BONED BUSTIER BODICE | BELOW THE KNEE LENGTH | CONCEALED SIDE ZIPPER | INTERNAL WAISTBAND WITH HOOK-AND-BAR CLOSURE | SEMI SHEER

Rental Size : SMALL | AU6-8 | WAIST 65-74cm

Rental Price: \$630\* (4 days), \$1190\* (8 days) | Custom-Order: \$4200

\*Rental Price includes professional dry cleaning fee

SENI | BLOSSOMS COLLECTION



PRODUCT CATALOG



LILY GOWN

SENI | BLOSSOMS COLLECTION

PRODUCT CATALOG



# ROSE GOWN

Opt for timeless elegance in this strapless blush ballgown crafted in soft tulle, with fitted bodice and full textured skirt.

OFF-THE-SHOULDER | SWEETHEART NECKLINE | BONED BUSTIER BODICE |  
PETTICOAT | INTERNAL WAISTBAND WITH HOOK AND EYE CLOSURE |  
ADJUSTABLE BACK LACE BODICE CLOSURE | SKIRT ZIP CLOSURE

Rental Size : SMALL | AU6-8 | WAIST 65-74cm

Rental Price: \$1035\* (4 days), \$2000\* (8 days) | Custom-Order: \$6900

\*Rental Price includes professional dry cleaning fee

SENI | BLOSSOMS COLLECTION



PRODUCT CATALOG



ROSE GOWN

SENI | BLOSSOMS COLLECTION

PRODUCT CATALOG



# PEONY GOWN

Boasting an all-over 3D beaded floral lace, this strapless gown features a fitted bodice and a full skirt.

STRAIGHT NECKLINE | BONED BUSTIER BODICE | PETTICOAT | ADJUSTABLE  
BACK LACE BODICE CLOSURE | INNER BELT | SKIRT ZIP CLOSURE |  
REMOVABLE OUTER BELT | ASYMMETRICAL HEMLINE

Rental Size : SMALL | AU6-8 | WAIST 65-74cm

Rental Price: \$930\* (4 days), \$1790\* (8 days) | Custom-Order: \$6200

\*Rental Price includes professional dry cleaning fee

SENI | BLOSSOMS COLLECTION



PRODUCT CATALOG



# PEONY GOWN

SENI | BLOSSOMS COLLECTION

PRODUCT CATALOG



# DAISY GOWN

Aim for a timeless elegance at your wedding in this gown, featuring floral fine lace all over the fitted bodice and a full voluminous light skirt.

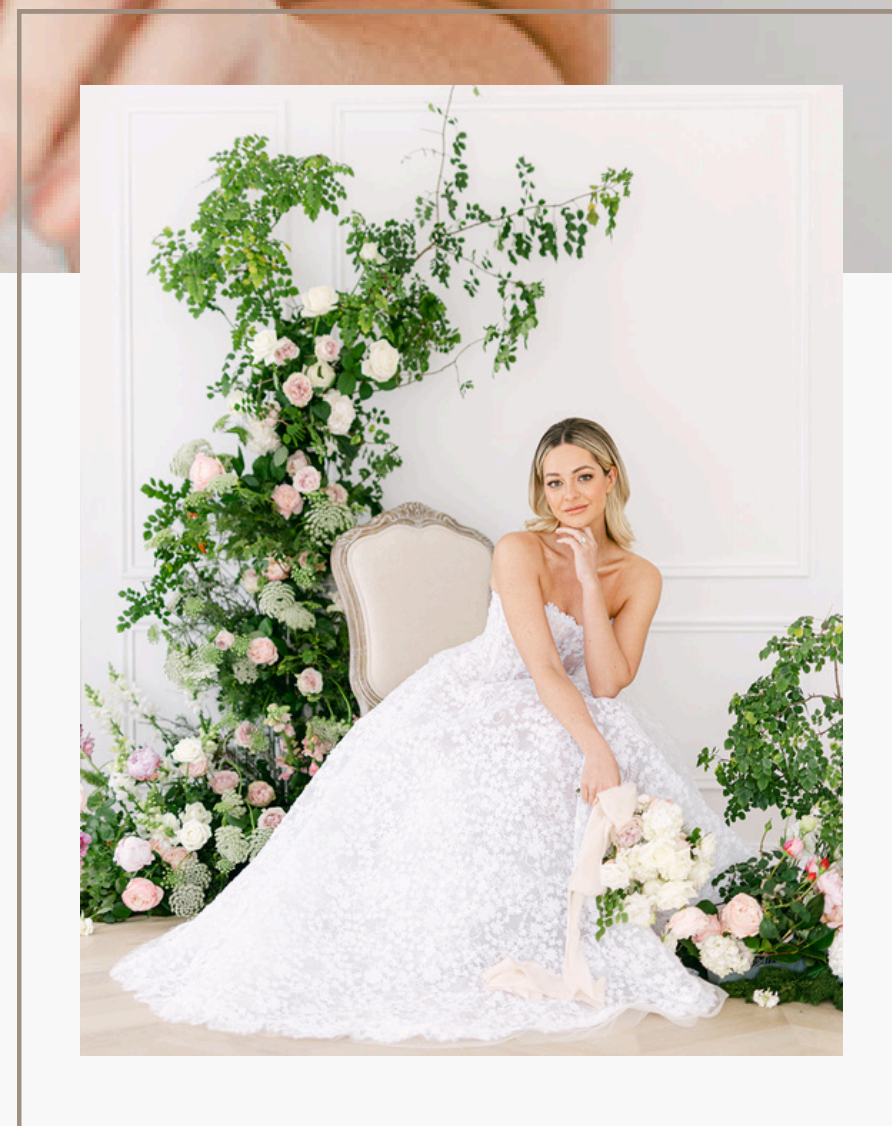
STRAIGHT NECKLINE | SEMI-SHEER | BONED BUSTIER BODICE | LINED |  
PETTICOAT | ADJUSTABLE BACK LACE BODICE CLOSURE | INNER BELT |  
SKIRT ZIP CLOSURE | ASYMMETRICAL HEMLINE

Rental Size : SMALL | AU6-8 | WAIST 65-74cm

Rental Price: \$1035\* (4 days), \$2000\* (8 days) | Custom-Order: \$6900

\*Rental Price includes professional dry cleaning fee

SENI | BLOSSOMS COLLECTION



PRODUCT CATALOG





DAISY GOWN

SENI | BLOSSOMS COLLECTION

PRODUCT CATALOG



# ANGEL GOWN

Aim for a classic ethereal elegance at your wedding. This full length gown features fern motif lace intertwined in soft tulle.

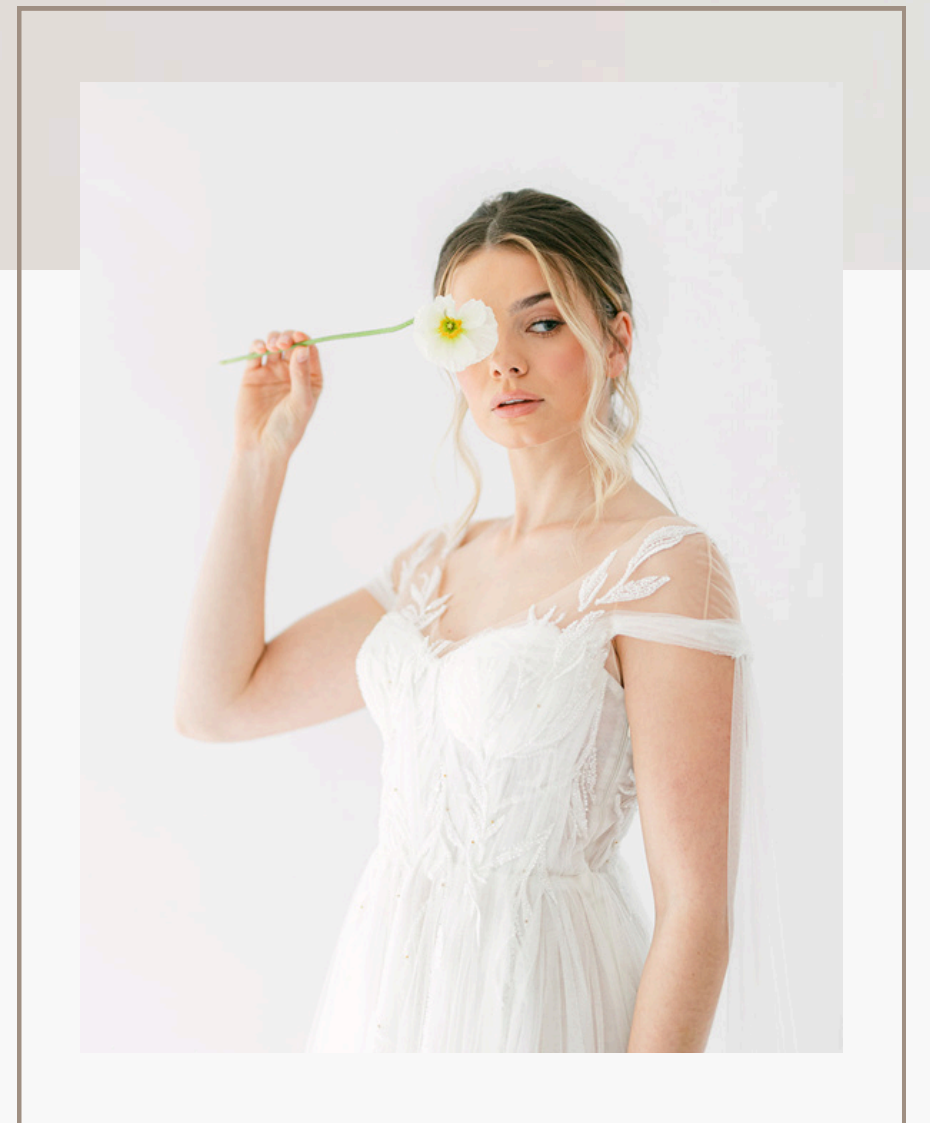
ILLUSION NECKLINE | BONED BUSTIER BODICE | LINED | INTERNAL WAISTBAND WITH HOOK AND EYE CLOSURE | SIDE ZIP CLOSURE

Rental Size : SMALL | AU6-8 | WAIST 65-74cm

Rental Price: \$975 (4 days), \$1880\* (8 days) | Custom-Order: \$6500

\*Rental Price includes dry cleaning, excluding postage

SENI | BLOSSOMS COLLECTION



PRODUCT CATALOG



ANGEL GOWN

SENI | BLOSSOMS COLLECTION

PRODUCT CATALOG



# CONTACT US

EMAIL: [WIES.COUTURE@GMAIL.COM](mailto:WIES.COUTURE@GMAIL.COM)

INSTAGRAM: [@SENI.COUTURE](https://www.instagram.com/SENI.COUTURE)

TRY-ONS AND IN-PERSON CONSULTATIONS ARE WELCOME AT OUR HOME STUDIO IN  
RINGWOOD (VIC 3134)  
BY APPOINTMENT

SENI | BLOSSOMS COLLECTION

PRODUCT CATALOG